

**BEEF SOLUTIONS
BULL SALE**

Fall Round Up

CIRCLE RANCH, IONE, CA

Angus ■ SimAngus



SEPTEMBER 22, 2011 • 1 P.M.

BEEF SOLUTIONS BULL SALE

Fall Round Up

CIRCLE RANCH, IONE, CA

Angus ■ SimAngus

SEPTEMBER 22, 2011

1:00 p.m.

HOTEL ACCOMMODATIONS:

Comfort Inn, Galt, CA (209) 744-7800
Ione Hotel, Ione, CA (209) 274-6082
Holiday Inn Express, Jackson, CA (209) 257-1500

SALE SITE:

The sale will be held at Circle Ranch in Ione, CA. See map on back cover.

HERD HEALTH:

All bulls in the sale have been Anaplas vaccinated and have been tested free of BVD persistent infection.

SEMEN TESTING:

All bulls selling have passed a rigid semen test and fertility evaluation by an accredited technician.

RETAINED SEMEN INTEREST:

The Beef Solutions breeders are retaining one-third semen interest on all bulls selling in the sale, unless stated otherwise. Buyer receives possession and full salvage value on the bulls.

SUPPLEMENTAL INFORMATION:

A supplemental sheet, with up-to-date performance information on all bulls, is currently available from each producer and will be available in hard-copy form on sale day. This sheet and any announcements from the block will take precedence over the printed material in the sale book.

GENETIC INFORMATION:

All potential carriers for the known genetic defects, Arthrogyrosis Multiplex (AM) and Neuropathic Hydrocephalus (NH) have tested free. Contact either producer for a copy of the results.

LIVESTOCK INSURANCE:

An agent representing Harding & Harding, American Livestock Insurance Co. will be available at the time of settlement.

BULL DELIVERY:

Free delivery in California and adjoining states up to 300 miles. All deliveries are made at the buyer's risk. Take \$50 off the purchase price for every bull hauled home sale day.

HOSPITALITY:

Refreshments will be available throughout the day, and a complimentary Prime Rib lunch will be served at noon.

BULL GUARANTEE:

All bulls selling have passed a Breeding Soundness Exam prior to sale. To insure your investment, the Beef Solutions Team will guarantee all bulls against breeding injury, and to be sound breeders for the first breeding season. Breeding Season is defined as the 90-day period following the first turnout of bulls. If a problem arises, contact us immediately and we will provide a replacement bull if available, or if the buyer prefers, credit toward a bull will be given for the upcoming sale, less salvage value of the injured bull. Notification of an injury or problem PRIOR to bull being sold for salvage is required for the actions of the guarantee.

TERMS AND CONDITIONS:

All purchases are to be settled for SALE DAY unless prior arrangements have been made. The cattle will all sell under the Terms and Conditions adopted by the American Angus Association effective February 18, 2009.

DISCLAIMER:

The Beef Solutions Breeders and Circle Ranch assume no liability for accidents or injury that may occur. Attend the sale at your own risk.

SALE DAY PHONES:

Tim Curran (209) 765-1815

Joe Fischer (530) 392-0154

AUCTIONEERS:



Rick Machado
(805) 474-9422
(805) 501-3210



John Rodgers
(559) 734-1301
(559) 730-3311

LIVESTOCK REPRESENTATIVES:

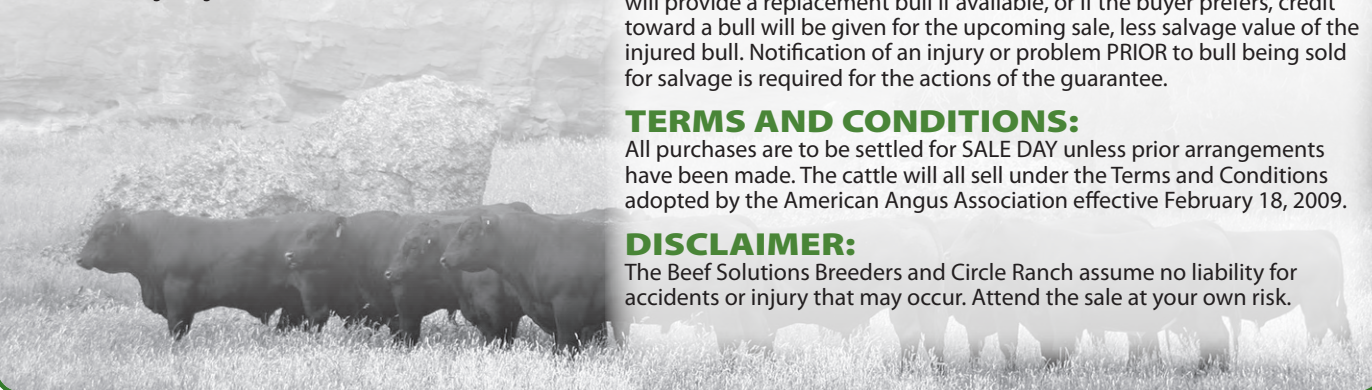
Logan Ipsen, American Angus Association
Matt Macfarlane, California Cattleman Magazine
Jerry York, Western Livestock Journal
Marty Ropp, Allied Genetic Resources
Jim Danekas, Angus the Magazine and Western Cowman

ALLIED
GENETIC RESOURCES



Visit the *Angus Journal*® Web site,
www.angusjournal.com,
and view this sale book online.

References: American Angus Association®, AHIR®, Angus Source®, CAB®, Pathfinder®
EPDs current as of August 9, 2011. Updated EPDs can be viewed
online at www.angus.org.





Welcome to the 5th Annual Beef Solutions Fall Round Up Sale

THURSDAY, SEPTEMBER 22, 2011
150 PERFORMANCE BULLS SELL
Angus and SimAngus

Cattle will be available for inspection beginning
Tuesday, September 20 through the conclusion of the sale.



2356 Gold Meadow Way Ste. 201
Gold River, CA 95670
Ranch located in Auburn, CA
Lloyd Harvego, owner
Joe Fischer (530) 392-0154
E-mail: joe@harvego.com
www.bruinranch.com



Circle Ranch

SimAngus and Angus Seedstock
Tim & Jill Curran: (209) 765-1815
1000 Cook Rd. • Ione, CA 95640
Web Site: www.circleranch.net
E-mail: circleranch@volcano.net

**WIN A
FREE
BULL!**

See page 26
for details.

Angus Bulls

Lots 1-62

SimAngus Bulls

Lots 63-150

Dear Fellow Cattlemen and Friends –

Welcome to the Fifth Annual “Beef Solutions” Fall Round Up Bull Sale. The state of our industry is strong as the demand for quality beef continues to far exceed the supply. Ample rains on the west coast and high butcher cow markets have further driven the prices of bred cows, pairs and calves to all-time records. As we write this letter, many of our longtime friends and family members are experiencing the best times of their lives in the cattle business.

We continue to strive toward breeding higher quality, functional cattle that work in the commercial cattleman’s environment. The high butcher market has made it easy for us to continue to cull deep into the heart of our cow herds, leaving us with problem-free cattle with good udder quality, fertility and structurally sound feet and legs. While we feel our cattle have adequate EPDs, we still feel that they are one of the many selection tools at our disposal. We refuse to sacrifice traits that some call “convenience traits” for a number on a piece of paper. In fact, for us, “convenience traits” are what we feel to be the traits necessary to survive the culling procedures in our respective cowherds. This mentality is what keeps us focused on the most important part of a cow/calf operation--the mother cow.

Once again we are offering the free bull drawing. Congratulations to Brennan Cattle Co. of Oakdale for winning the free bull last year. If you are new to our sale, upon completion of the sale a lot number will be drawn and the purchaser of that corresponding lot will be given a credit equal to the final sale average. If the bull selected was purchased for less than the sale average, the bull will be free without additional cash compensation. Purchaser must be present to win!

The yearling and 18-month-old bulls have been developed on high forage diets in order to keep them as athletic as possible and are available for previewing at Snyder’s Livestock. The two-year-old bulls have been on native grass and pasture since October of last year at Circle Ranch (see page 30 for details). Contact either producer to view the bulls.

We look forward to seeing you for a prime rib lunch on Thursday, September 22 at noon in Ione, California. Please feel free to contact the ranch managers with any questions.

Tim Curran
Cell (209) 765-1815

Joe Fischer
(530) 392-0154



Bruin 6262 Impression 9243 - Lot 1

1

BRUIN 6262 IMPRESSION 9243

Birth Date: 12-22-2009 Bull 16855846 Tattoo: 9243

Connealy Reflection [AMF-CAF-M1F-NHF]	#Bon View New Design 878 [AMF-CAF-M1F-NHF]	\$W
15543702	Happy Grill of Conanga 6260	+28.03
	#Vermilion Dateline 7078 [AMF-CAF-M1F-NHF]	\$F
	Pearl Pammy of Conanga 194 [CAF]	+50.05
	#GAR Retail Product [AMF-CAF-M1F-NHF]	\$G
Bruin 5659 Mayflower 6050	#GAR Precision 1680 [AMC-NHC]	+30.02
15444338	+GAR Ext 4927	\$B
	#+GAR Grid Maker [AMF-CAF-M1F-NHF]	+68.55
	Thomas Mayflower 4389	
	#Thomas Patricia 0672	

CED	BEPD	WEPD	YEPD	MILK	SEN	MARB	RE	FAT
+5	+1.5	+60	+114	+25	-11.17	+35	+93	+001

Beef Solutions Toolbox

PERFORMANCE SWN

3

BRUIN 6262 IMPRESSION 9222

Birth Date: 11-13-2009 Bull 16855841 Tattoo: 9222

Connealy Reflection [AMF-CAF-M1F-NHF]	#Bon View New Design 878 [AMF-CAF-M1F-NHF]	\$W
15543702	Happy Grill of Conanga 6260	+27.63
	#Vermilion Dateline 7078 [AMF-CAF-M1F-NHF]	\$F
	Pearl Pammy of Conanga 194 [CAF]	+43.81
	#+OCC Doctor 940D [CAF-M1F]	\$G
Advantage Ebony 1317	#+Rito 9FB3 of 5H11 Fullback [AMF-CAF-M1F-NHF]	+16.08
+14195758	Dixie Erica of CH 1019	\$B
	#DHD Traveler 6807 [AMF-NHF]	+53.19
	Poly Ebony 2053	
	Poly Ebony 102	

CED	BEPD	WEPD	YEPD	MILK	SEN	MARB	RE	FAT
+4	+1.7	+57	+107	+24	-8.00	+13	+42	-006

Beef Solutions Toolbox

PERFORMANCE SWN

2

BRUIN 6262 IMPRESSION 9244

Birth Date: 12-22-2009 Bull 16855847 Tattoo: 9244

Connealy Reflection [AMF-CAF-M1F-NHF]	#Bon View New Design 878 [AMF-CAF-M1F-NHF]	\$W
15543702	Happy Grill of Conanga 6260	+25.68
	#Vermilion Dateline 7078 [AMF-CAF-M1F-NHF]	\$F
	Pearl Pammy of Conanga 194 [CAF]	+53.92
	#GAR Retail Product [AMF-CAF-M1F-NHF]	\$G
Bruin 5659 Patricia 6057	#GAR Precision 1680 [AMC-NHC]	+29.09
15444341	+GAR Ext 4927	\$B
	#Rito 616 of 4B20 6807 [AMF-CAF-M1F-NHF]	+68.89
	Thomas Patricia 2049	
	#Thomas Patricia 0672	

CED	BEPD	WEPD	YEPD	MILK	SEN	MARB	RE	FAT
+7	+4	+56	+116	+25	-11.90	+51	+58	+018

Beef Solutions Toolbox

CALVING EASE QUALITY GRADE PERFORMANCE SWN

4

BRUIN 6262 IMPRESSION 0025

Birth Date: 1-23-2010 Bull 16855087 Tattoo: 0025

Connealy Reflection [AMF-CAF-M1F-NHF]	#Bon View New Design 878 [AMF-CAF-M1F-NHF]	\$W
15543702	Happy Grill of Conanga 6260	+25.24
	#Vermilion Dateline 7078 [AMF-CAF-M1F-NHF]	\$F
	Pearl Pammy of Conanga 194 [CAF]	+50.89
	#TC Total 410 [AMF-CAF-M1F-NHF]	\$G
Bruin 410 Forever Lady 8056 [NHF]	+TC Erica Eileen 2047 [NHC-AMF]	+29.00
16175456	#SS Traveler 6807 T510 [AMF-CAF-M1F-NHF]	\$B
	+VAR Forever Lady 2202	+67.79
	#KMK Forever Lady F9 of Bando	

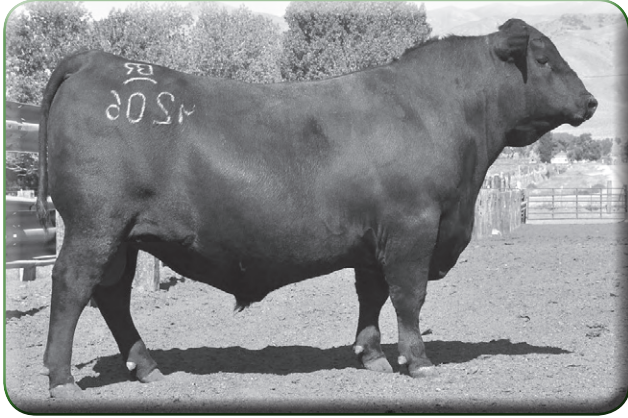
CED	BEPD	WEPD	YEPD	MILK	SEN	MARB	RE	FAT
+1	+2.2	+58	+114	+25	-11.17	+50	+52	+009

Beef Solutions Toolbox

QUALITY GRADE PERFORMANCE

Breed Averages • 2011 Non-Parent Angus Bulls

CED +5	BW +1.8	WW +47	YW +85	Milk +22	SEN +56	Marb +39	RE +27	Fat +009	\$W +26.03	\$F +25.81	\$G +24.18	\$B +50.24
--------	---------	--------	--------	----------	---------	----------	--------	----------	------------	------------	------------	------------



Bruin 6262 Impression 9206 - Lot 5

5

BRUIN 6262 IMPRESSION 9206

Birth Date: 10-26-2009 Bull 16855833 Tattoo: 9206

Connealy Reflection [AMF-CAF-M1F-NHF]	#Bon View New Design 878 [AMF-CAF-M1F-NHF]	\$W
Connealy Impression [AMF-CAF-M1F-NHF]	Happy Grill of Conanga 6260	+29.06
15543702 Pearl Pammy of Conanga 194 [CAF]	#Vermilion Dateline 7078 [AMF-CAF-M1F-NHF]	\$F
	Pearl Jam of Conanga 6114	+50.96
		\$G
Bruin 4132 Rita 7642	#+OCC Emblazon 854E [CAF-M1F]	+22.55
+16153161 +VAR Rita 2080 [AMF]	#CAF Pure Pride Ext 99	\$B
	#GDAR Traveler 71 [AMF-CAF-M1F-NHF]	+60.77
	+Rita OM26 of 5H11 Scotch Cap	

CED	BEPD	WEPD	YEPD	MILK	SEN	MARB	RE	FAT
+3	+1.9	+63	+116	+28	-14.64	1+.37	1+.40	1+.018

Beef Solutions Toolbox

QUALITY GRADE PERFORMANCE SWN

8

BRUIN 534 EFFICIENT 9212 [CAF]

Birth Date: 11-7-2009 Bull 16855836 Tattoo: 9212

KCF Bennett Efficient	#Connealy Forefront [AMF-CAF-M1F-NHF]	\$W
CAR Efficient 534 [AMF-CAF-M1F-NHF]	KCF BL Miss 5522 E152	+28.60
15170660 #CAR Miss Susie 308	#CAR Duke 104	\$F
	CAR Miss Trendy 449	+49.56
		\$G
#+SAF 598 Bando 5175 [CAF-AMF]	#Bon View Bando 598 [CAF-AMF]	+19.70
Bruin 5175 Diana Russ C02	+SAF Royal Lass 1002	\$B
+14476213 +Vian Diana Russ 9304	#+Gdar SVF Russ 184B	+53.65
	Wulffs Erica Dianna C116	

CED	BEPD	WEPD	YEPD	MILK	SEN	MARB	RE	FAT
+6	+1.4	+56	+112	+31	-14.48	1+.20	1+.35	1-.001

Beef Solutions Toolbox

CALVING EASE PERFORMANCE SWN

9

BRUIN 534 EFFICIENT 9234 [AMF]

Birth Date: 12-13-2009 Bull 16855842 Tattoo: 9234

KCF Bennett Efficient	#Connealy Forefront [AMF-CAF-M1F-NHF]	\$W
CAR Efficient 534 [AMF-CAF-M1F-NHF]	KCF BL Miss 5522 E152	+29.43
15170660 #CAR Miss Susie 308	#CAR Duke 104	\$F
	CAR Miss Trendy 449	+45.75
		\$G
#SAV 8180 Traveler 004 [AMF-CAF-D2F-M1F-NHF-RDF]	#Sitz Traveler 8180 [AMF-CAF-M1F-NHF]	+10.93
Tri Star BR Hanna 6607 [AMC-NHF]	+Boyd Forever Lady 8003	\$B
+15683228 Hanna of Holiday 3036	#White Oak Precise 6002 [AMC-NHC-CAF-M1F]	+48.08
	#Hanna of Holiday 1023	

CED	BEPD	WEPD	YEPD	MILK	SEN	MARB	RE	FAT
+5	+1.9	+60	+110	+36	-20.57	+26	+1.0	+0.035

Beef Solutions Toolbox

PERFORMANCE SWN

6

BRUIN 6262 IMPRESSION 0065

Birth Date: 2-26-2010 Bull 16858772 Tattoo: 0065

Connealy Reflection [AMF-CAF-M1F-NHF]	#Bon View New Design 878 [AMF-CAF-M1F-NHF]	\$W
Connealy Impression [AMF-CAF-M1F-NHF]	Happy Grill of Conanga 6260	+22.67
15543702 Pearl Pammy of Conanga 194 [CAF]	#Vermilion Dateline 7078 [AMF-CAF-M1F-NHF]	\$F
	Pearl Jam of Conanga 6114	+50.65
		\$G
#GAR Retail Product [AMF-CAF-M1F-NHF]	#GAR Precision 1680 [AMC-NHC]	+21.74
Bruin 5659 Kind Princes 8068 [NHF]	+GAR Ext 4927	\$B
16175463 Bruin L309 Kind Princes 4191	#+WCC Special Design L309 [AMF-CAF-M1F-NHF]	+60.48
	Advantage Kind Princess 2336 [CAF]	

CED	BEPD	WEPD	YEPD	MILK	SEN	MARB	RE	FAT
-3	+3.0	+56	+113	+26	-11.78	+34	+32	+0.004

Beef Solutions Toolbox

PERFORMANCE

10

BRUIN 534 EFFICIENT 0036

Birth Date: 2-13-2010 Bull 16858763 Tattoo: 0036

KCF Bennett Efficient	#Connealy Forefront [AMF-CAF-M1F-NHF]	\$W
CAR Efficient 534 [AMF-CAF-M1F-NHF]	KCF BL Miss 5522 E152	+27.34
15170660 #CAR Miss Susie 308	#CAR Duke 104	\$F
	CAR Miss Trendy 449	+32.32
		\$G
#+Rito 2 878 of 2536 BVND 878 [AMF-NHF]	#Bon View New Design 878 [AMF-CAF-M1F-NHF]	+15.02
Bruin 2 878 Ebony 8445	GAR Precision 2536 [AMC-NHF]	\$B
+16204464 Poly 6595 Ebony 3180	#Sitz Alliance 6595 [AMF-M1F-NHF]	+43.46
	+Poly 6807 Ebony 8119 Et	

CED	BEPD	WEPD	YEPD	MILK	SEN	MARB	RE	FAT
+6	+1.0	+47	+92	+33	-11.91	+22	+1.2	+0.021

Beef Solutions Toolbox

CALVING EASE PERFORMANCE SWN

7

BRUIN 534 EFFICIENT 9213

Birth Date: 11-7-2009 Bull 16855837 Tattoo: 9213

KCF Bennett Efficient	#Connealy Forefront [AMF-CAF-M1F-NHF]	\$W
CAR Efficient 534 [AMF-CAF-M1F-NHF]	KCF BL Miss 5522 E152	+34.53
15170660 #CAR Miss Susie 308	#CAR Duke 104	\$F
	CAR Miss Trendy 449	+35.26
		\$G
#Rito 616 of 4B20 6807 [AMF-CAF-M1F-NHF]	#DHD Traveler 6807 [AMF-NHF]	+22.49
Thomas Patricia 2049	+Rita 4B20 of OFB1 Bando	\$B
14107371 +Thomas Patricia 0672	#+VDAR Lucys Boy [AMF-CAF-M1F-NHF]	+52.91
	#Thomas Patricia 1176	

CED	BEPD	WEPD	YEPD	MILK	SEN	MARB	RE	FAT
+11	-1.2	+55	+98	+32	-11.35	1+.35	1+.35	1+.025

Beef Solutions Toolbox

CALVING EASE PERFORMANCE SWN

11

BRUIN 534 EFFICIENT 0049

Birth Date: 2-18-2010 Bull 16858765 Tattoo: 0049

KCF Bennett Efficient	#Connealy Forefront [AMF-CAF-M1F-NHF]	\$W
CAR Efficient 534 [AMF-CAF-M1F-NHF]	KCF BL Miss 5522 E152	+27.01
15170660 #CAR Miss Susie 308	#CAR Duke 104	\$F
	CAR Miss Trendy 449	+35.59
		\$G
#SAV 8180 Traveler 004 [AMF-CAF-D2F-M1F-NHF-RDF]	#Sitz Traveler 8180 [AMF-CAF-M1F-NHF]	+8.59
Bruin 004 Forever Lady 7404	+Boyd Forever Lady 8003	\$B
+15795839 +VAR Forever Lady 2202	#SS Traveler 6807 T510 [AMF-CAF-M1F-NHF]	+37.96
	+KMK Forever Lady F9 of Bando	

CED	BEPD	WEPD	YEPD	MILK	SEN	MARB	RE	FAT
+5	+1.3	+49	+96	+30	-10.22	+13	+0.09	+0.036

Beef Solutions Toolbox

PERFORMANCE SWN

Breed Averages • 2011 Non-Parent Angus Bulls

4	CED+5	BW+1.8	WW+47	YW+85	Milk+22	SEN+56	Marb+39	RE+27	Fat+0.09	\$W+26.03	\$F+25.81	\$G+24.18	\$B+50.24
----------	--------------	---------------	--------------	--------------	----------------	---------------	----------------	--------------	-----------------	------------------	------------------	------------------	------------------



Bruin Uproar 0070 - Lot 12

12 **BRUIN UPROAR 0070**
 Birth Date: 2-27-2010 Bull +16858775 Tattoo: 0070

Connealy Onward [AMF-CAF-MIF-NHF]	#Connealy Lead On [AMF-CAF-MIF-NHF]	\$W
Sitz Upward 307R [AMF-CAF-MIF-NHF]	Altune of Conanga 6104	+25.56
14963730	Sitz Henrietta Pride 81M	\$F
	#Sitz Value 7097 [AMF-CAF-MIF-NHF]	+50.05
	Sitz Henrietta Pride 1370	\$G
	#Connealy Dateline	+30.99
Falcon Blackbird 6071	#DHD Traveler 6807 [AMF-NHF]	\$B
+14068805	#Eila Eila of Conanga [AMF]	+70.00
	#+Leachman Right Time	
	Vermilion Blackbird 3525	

CED	BEPD	WEPD	YEPD	MILK	SEN	MARB	RE	FAT
+3	+3.1	+60	+114	+25	-10.33	+57	+54	+0.07

Beef Solutions Toolbox
 QUALITY GRADE PERFORMANCE SWN

13 **BRUIN 307R UPWARD 0060**
 Birth Date: 2-26-2010 Bull +16858771 Tattoo: 0060

Connealy Onward [AMF-CAF-MIF-NHF]	#Connealy Lead On [AMF-CAF-MIF-NHF]	\$W
Sitz Upward 307R [AMF-CAF-MIF-NHF]	Altune of Conanga 6104	+25.12
14963730	Sitz Henrietta Pride 81M	\$F
	#Sitz Value 7097 [AMF-CAF-MIF-NHF]	+51.14
	Sitz Henrietta Pride 1370	\$G
	#Connealy Dateline	+20.07
Falcon Blackbird 6071	#DHD Traveler 6807 [AMF-NHF]	\$B
+14068805	#Eila Eila of Conanga [AMF]	+60.70
	#+Leachman Right Time	
	Vermilion Blackbird 3525	

CED	BEPD	WEPD	YEPD	MILK	SEN	MARB	RE	FAT
1+4	+3.2	+60	+115	+25	-10.56	+21	+58	-0.08

Beef Solutions Toolbox
 PERFORMANCE



CED	BEPD	WEPD	YEPD	MILK	SEN	MARB	RE	FAT
+7	+2.4	+71	+137	+44	-32.43	+38	+60	+0.04

Sitz Upward 307R

Upward was chosen as a bull to offer big-time growth and carcass excellence to our cow herd. Used mostly on more moderate and small-framed cows, these cattle have excelled in growth in all phases of production. Lots 12 and 13 specifically represent the goals and ideals we set forth producing herd bulls. Their dam (6071) is a 10-year-old full sister to the popular Vermilion Dateline 7078 "VRD." 6071 has perfect feet, a gentle temperament and breeds back on time every year. These bulls are herd changers.

Breed Averages • 2011 Non-Parent Angus Bulls

CED +5	BW +1.8	WW +47	YW +85	Milk +22	SEN +56	Marb +39	RE +27	Fat +0.09	\$W +26.03	\$F +25.81	\$G +24.18	\$B +50.24
--------	---------	--------	--------	----------	---------	----------	--------	-----------	------------	------------	------------	------------

14

BRUIN 307R UPWARD 0053

Birth Date: 2-26-2010 Bull 16858767 Tattoo: 0053

Connealy Onward [AMF-CAF-M1F-NHF]	#Connealy Lead On [AMF-CAF-M1F-NHF]	\$W
Sitz Upward 307R [AMF-CAF-M1F-NHF]	Altune of Conanga 6104	+32.54
14963730 Sitz Henrietta Pride 81M	#Sitz Value 7097 [AMF-CAF-M1F-NHF]	\$F
	Sitz Henrietta Pride 1370	+43.87
	#BR Midland [AMF-CAF-M1F-NHF]	\$G
Bruin 11 Lucy 5101	#Twin Valley Precision E161 [NHC-AMF-CAF-M1F-RDF]	\$G
15096539 +VAR Lucy 3231	BR Royal Lass 7036-19	+24.49
	#SAF Focus of ER [AMF-CAF-M1F-NHF]	\$B
	+VAR Lucy 148G	+61.00

CED	BEPD	WEPD	YEPD	MILK	SEN	MARB	RE	FAT
+8	+7	+62	+109	+28	-12.13	+51	+32	+0.29

Beef Solutions Toolbox

CALVING EASE
 QUALITY GRADE
 PERFORMANCE
 SWN

18

BRUIN 307R UPWARD 0069

Birth Date: 3-1-2010 Bull +16858774 Tattoo: 0069

Connealy Onward [AMF-CAF-M1F-NHF]	#Connealy Lead On [AMF-CAF-M1F-NHF]	\$W
Sitz Upward 307R [AMF-CAF-M1F-NHF]	Altune of Conanga 6104	+27.30
14963730 Sitz Henrietta Pride 81M	#Sitz Value 7097 [AMF-CAF-M1F-NHF]	\$F
	Sitz Henrietta Pride 1370	+33.39
	+OCC Judge 679J	\$G
Cane Ridge Bonny 2398M [AMF]	#+OCC Emblazon 854E [CAF-M1F]	\$G
14463313	+OCC Dixie Erica 816B	+19.75
	#Schoenes Fix It 826 [AMF-CAF-M1F-NHF]	\$B
	Thomas Bonnie Lass 4164	+50.99

CED	BEPD	WEPD	YEPD	MILK	SEN	MARB	RE	FAT
I+7	+3.0	+52	+95	+30	-8.70	+13	+54	-0.14

Beef Solutions Toolbox

CALVING EASE
 PERFORMANCE
 SWN

15

BRUIN 307R UPWARD 0059

Birth Date: 2-26-2010 Bull 16858770 Tattoo: 0059

Connealy Onward [AMF-CAF-M1F-NHF]	#Connealy Lead On [AMF-CAF-M1F-NHF]	\$W
Sitz Upward 307R [AMF-CAF-M1F-NHF]	Altune of Conanga 6104	+27.48
14963730 Sitz Henrietta Pride 81M	#Sitz Value 7097 [AMF-CAF-M1F-NHF]	\$F
	Sitz Henrietta Pride 1370	+48.49
	#Mytty In Focus [AMF-CAF-M1F-NHF-RDF]	\$G
Bruin 109 Kind Princess 6437	#SAF Focus of ER [AMF-CAF-M1F-NHF]	\$G
+15447305 Advantage Kind Princess 2336 [CAF]	Mytty Countess 906	+26.00
	#+SAF 598 Bando 5175 [CAC-AMF]	\$B
	Tehama Kindnes Princess D517	+64.02

CED	BEPD	WEPD	YEPD	MILK	SEN	MARB	RE	FAT
+8	+1.4	+56	+111	+34	-18.70	+41	+36	-0.06

Beef Solutions Toolbox

CALVING EASE
 QUALITY GRADE
 PERFORMANCE
 SWN

19

BRUIN 4168 GRID MAKER 0029 [CAF]

Birth Date: 1-30-2010 Bull 16855088 Tattoo: 0029

#+GAR Grid Maker [AMF-CAF-M1F-NHF]	#GDAR Traveler 044 [AMF-CAF-M1F-NHF]	\$W
VAR Grid Maker 4168 [AMF]	GAR Precision 2536 [AMC-NHF]	+26.82
+14664918 VAR Susanna 1014	#SAF Focus of ER [AMF-CAF-M1F-NHF]	\$F
	VAR Susanna 8131	+38.34
	#Connealy Lead On [AMF-CAF-M1F-NHF]	\$G
Bruin 9794 Forever Lady 6450 [CAF]	#Connealy Leadtime [AMF-CAF-M1F-NHF]	\$G
+15447307 +BAAR Forever Lady 172	Eligence Plus of Conanga	+33.90
	#Bon View Bando 598 [CAC-AMF]	\$B
	+Broken Arrow Forever Lady922	+63.27

CED	BEPD	WEPD	YEPD	MILK	SEN	MARB	RE	FAT
+6	+1.7	+55	+101	+19	-1.75	+55	+42	-0.09

Beef Solutions Toolbox

CALVING EASE
 QUALITY GRADE
 PERFORMANCE
 SWN

16

BRUIN 307R UPWARD 9242

Birth Date: 12-20-2009 Bull 16855845 Tattoo: 9242

Connealy Onward [AMF-CAF-M1F-NHF]	#Connealy Lead On [AMF-CAF-M1F-NHF]	\$W
Sitz Upward 307R [AMF-CAF-M1F-NHF]	Altune of Conanga 6104	+30.39
14963730 Sitz Henrietta Pride 81M	#Sitz Value 7097 [AMF-CAF-M1F-NHF]	\$F
	Sitz Henrietta Pride 1370	+33.39
	#Mytty In Focus [AMF-CAF-M1F-NHF-RDF]	\$G
Bruin 109 Forever Lady 6415	#SAF Focus of ER [AMF-CAF-M1F-NHF]	\$G
+15447300 +VAR Forever Lady 2202	Mytty Countess 906	+27.50
	#SS Traveler 6807 T510 [AMF-CAF-M1F-NHF]	\$B
	+KMK Forever Lady F9 of Bando	+58.46

CED	BEPD	WEPD	YEPD	MILK	SEN	MARB	RE	FAT
+9	+9	+52	+95	+34	-13.51	+54	+07	-0.03

Beef Solutions Toolbox

CALVING EASE
 QUALITY GRADE
 PERFORMANCE
 SWN

20

BRUIN 4168 GRID MAKER 0081

Birth Date: 3-1-2010 Bull 16858780 Tattoo: 0081

#+GAR Grid Maker [AMF-CAF-M1F-NHF]	#GDAR Traveler 044 [AMF-CAF-M1F-NHF]	\$W
VAR Grid Maker 4168 [AMF]	GAR Precision 2536 [AMC-NHF]	+26.20
+14664918 VAR Susanna 1014	#SAF Focus of ER [AMF-CAF-M1F-NHF]	\$F
	VAR Susanna 8131	+35.10
	BC Marathon 7022 [AMF-CAF-M1F-NHF]	\$G
SK Patton Echo 7903	OCC Kirby 633K	+22.50
+15762222 Diablo Echo 504	Gibbet Hill Mignonne E37	\$B
	#CH Stacker 7040	\$B
	Diablo Echo 774	+50.93

CED	BEPD	WEPD	YEPD	MILK	SEN	MARB	RE	FAT
+0	+3.6	+58	+99	+21	-2.74	+22	+47	-0.02

Beef Solutions Toolbox

PERFORMANCE
 SWN

17

BRUIN 307R UPWARD 9619

Birth Date: 9-6-2009 Bull +16855135 Tattoo: 9619

Connealy Onward [AMF-CAF-M1F-NHF]	#Connealy Lead On [AMF-CAF-M1F-NHF]	\$W
Sitz Upward 307R [AMF-CAF-M1F-NHF]	Altune of Conanga 6104	+29.14
14963730 Sitz Henrietta Pride 81M	#Sitz Value 7097 [AMF-CAF-M1F-NHF]	\$F
	Sitz Henrietta Pride 1370	+34.41
	#Finks 5522-6148	\$G
Tehama Kindnes Princess D517	#Emulation N Bar 5522	\$G
12191399 T Kindness Princess A560	Finks Proud Formera 614	+21.97
	#Tehama Bando 155 [AMF-CAF-M1F-NHF]	\$B
	T Kindness Princess Y774	+53.21

CED	BEPD	WEPD	YEPD	MILK	SEN	MARB	RE	FAT
I+4	I+2.8	I+52	I+96	I+34	-11.45	+37	+11	+0.03

Beef Solutions Toolbox

QUALITY GRADE
 PERFORMANCE
 SWN



Bruin 4168 Grid Maker 0081 - Lot 20

Breed Averages - 2011 Non-Parent Angus Bulls

CED+5	BW+1.8	WW+47	YW+85	Milk+22	SEN+56	Marb+39	RE+27	Fat+0.09	\$W+26.03	\$F+25.81	\$G+24.18	\$B+50.24
-------	--------	-------	-------	---------	--------	---------	-------	----------	-----------	-----------	-----------	-----------



Bruin 7301 Pioneer 9238 - Lot 21

21

BRUIN 7301 PIONEER 9238

Birth Date: 12-16-2009 Bull 16855844 Tattoo: 9238

#SAV Final Answer 0035 [AMF-CAF-M1F-NHF] #Sitz Traveler 8180 [AMF-CAF-M1F-NHF]
 SAV Pioneer 7301 [AMF-CAF-M1F-NHF] SAV Emulous 8145 [CAF]
 15688392 SAV Blackbird 5297 [CAC] #+Boyd New Day 8005 [AMF-CAF-M1F-NHF]
 SAV Blackbird 1082 [CAC]

\$W
+24.80
\$F
+38.11
\$G
+14.08
\$B
+47.63

#+Leachman Right Time
 VAR Rita 2252
 +14090770 +VAR Rita 8054

#N Bar Emulation EXT [AMF-CAF-M1F-NHF]
 Leachman Erica 0025
 #+VDAR Lucys Boy [AMF-CAF-M1F-NHF]
 +GAR Scotch Cap 199 [AMF]

CED	BEPD	WEPD	YEPD	MILK	SEN	MARB	RE	FAT
+3	+2.8	+53	+100	+24	-5.79	+25	+39	+0.54

Beef Solutions Toolbox

PERFORMANCE

22

BRUIN 7301 PIONEER 0031 [CAF]

Birth Date: 2-1-2010 Bull 16858761 Tattoo: 0031

#SAV Final Answer 0035 [AMF-CAF-M1F-NHF] #Sitz Traveler 8180 [AMF-CAF-M1F-NHF]
 SAV Pioneer 7301 [AMF-CAF-M1F-NHF] SAV Emulous 8145 [CAF]
 15688392 SAV Blackbird 5297 [CAC] #+Boyd New Day 8005 [AMF-CAF-M1F-NHF]
 SAV Blackbird 1082 [CAC]

\$W
+27.39
\$F
+39.61
\$G
+34.94
\$B
+62.12

#GAR Retail Product [AMF-CAF-M1F-NHF] #GAR Precision 1680 [AMC-NHC]
 Bruin 5659 Diana 8047 [CAF] +GAR Ext 4927
 +16175451 +Bruin 5175 Diana Russ C02 #+SAF 598 Bando 5175 [CAC-AMF]
 +Vian Diana Russ 9304

CED	BEPD	WEPD	YEPD	MILK	SEN	MARB	RE	FAT
+2	+2.6	+57	+103	+26	-8.60	+58	+54	+0.09

Beef Solutions Toolbox

QUALITY GRADE PERFORMANCE SWN



23

BRUIN 329 SHEAR FORCE 9617

Birth Date: 9-4-2009 Bull +16855133 Tattoo: 9617

#N Bar Prime Time D806 [AMF-CAF-M1F-NHF] #Gardens Prime Time [AMF-CAF-M1F-NHF]
 GT Shear Force [AMF-CAF-M1F-NHF] N Bar Miss Emulous A404
 14419184 #GT Siskin 106 #Plovman 1627 of Millbrae SAR [AMF-CAF-M1F-NHF]
 GT Rosalita 509

\$W
+27.59
\$F
+25.54
\$G
+10.54
\$B
+32.39

DDA Emblazon 27C [AMF-CAF-M1F-NHF] #+OCC Emblazon 854E [CAF-M1F]
 DDA Lana 585 #DDA Melisa 824
 15003334 Dda Lana 936 #+RR Bentley 779F
 DDA Lana 459

CED	BEPD	WEPD	YEPD	MILK	SEN	MARB	RE	FAT
1+8	1+1.7	1+44	1+84	1+20	+5.61	+27	-.05	+0.57

Beef Solutions Toolbox

CALVING EASE SEN SWN

SAV Pioneer 7301 - Sire of Lots 21 and 22.

Breed Averages - 2011 Non-Parent Angus Bulls

CED+5	BW+1.8	WW+47	YW+85	Milk+22	SEN+56	Marb+39	RE+27	Fat+0.09	\$W+26.03	\$F+25.81	\$G+24.18	\$B+50.24
-------	--------	-------	-------	---------	--------	---------	-------	----------	-----------	-----------	-----------	-----------



\$W
+32.69
\$F
+35.49
\$G
+23.24
\$B
+46.60

CED	BEPD	WEPD	YEPD	MILK	\$EN	MARB	RE	FAT
+13	+1	+57	+99	+20	-.23	+.14	+.60	-.018

SAV Bismarck 5682

24

BRUIN 5682 BISMARCK 8601 [CAF]

Birth Date: 8-30-2009 Bull +16855117 Tattoo: 9601

#+GAR Grid Maker [AMF-CAF-M1F-NHF]	#GDAR Traveler 044 [AMF-CAF-M1F-NHF]
SAV Bismarck 5682 [AMF-CAF-M1F-NHF]	GAR Precision 2536 [AMC-NHF]
+15109865 SAV Abigale 0451	#Schoenes Fix It 826 [AMF-CAF-M1F-NHF]
	SAV Abigale 6062
#+SAF 598 Bando 5175 [CAC-AMF]	#Bon View Bando 598 [CAC-AMF]
Bruin 5175 Diana Russ C02	+SAF Royal Lass 1002
+14476213 +Vian Diana Russ 9304	#+Gdar SVF Russ 184B
	Wulffs Erica Dianna C116

\$W
+32.57
\$F
+40.65
\$G
+25.77
\$B
+56.60

CED	BEPD	WEPD	YEPD	MILK	\$EN	MARB	RE	FAT
I+8	I+1.7	I+57	I+104	I+21	+.30	+.25	+.52	-.022

Beef Solutions Toolbox

CALVING EASE PERFORMANCE SWN

27

BRUIN 5682 BISMARCK 0105

Birth Date: 4-5-2010 Bull 16858783 Tattoo: 0105

#+GAR Grid Maker [AMF-CAF-M1F-NHF]	#GDAR Traveler 044 [AMF-CAF-M1F-NHF]
SAV Bismarck 5682 [AMF-CAF-M1F-NHF]	GAR Precision 2536 [AMC-NHF]
+15109865 SAV Abigale 0451	#Schoenes Fix It 826 [AMF-CAF-M1F-NHF]
	SAV Abigale 6062
#+Rito 112 of 2536 Rito 616 [AMF-CAF-M1F-NHF]	#Rito 616 of 4B20 6807 [AMF-CAF-M1F-NHF]
Bruin 112 Forever Lady 7427	GAR Precision 2536 [AMC-NHF]
+15795800 +BAAR USA Forever Lady 3066	#Bon View New Design 1407 [AMF-CAF-M1F-NHF]
	+HR Forever Lady 821

\$W
+29.01
\$F
+31.83
\$G
+34.46
\$B
+55.22

CED	BEPD	WEPD	YEPD	MILK	\$EN	MARB	RE	FAT
+6	+2.1	+56	+95	+20	-.59	+.51	+.37	-.016

Beef Solutions Toolbox

QUALITY GRADE PERFORMANCE SWN

25

BRUIN 5682 BISMARCK 9606 [CAF]

Birth Date: 9-2-2009 Bull +16855122 Tattoo: 9606

#+GAR Grid Maker [AMF-CAF-M1F-NHF]	#GDAR Traveler 044 [AMF-CAF-M1F-NHF]
SAV Bismarck 5682 [AMF-CAF-M1F-NHF]	GAR Precision 2536 [AMC-NHF]
+15109865 SAV Abigale 0451	#Schoenes Fix It 826 [AMF-CAF-M1F-NHF]
	SAV Abigale 6062
#+SAF 598 Bando 5175 [CAC-AMF]	#Bon View Bando 598 [CAC-AMF]
Bruin 5175 Diana Russ C02	+SAF Royal Lass 1002
+14476213 +Vian Diana Russ 9304	#+Gdar SVF Russ 184B
	Wulffs Erica Dianna C116

\$W
+32.57
\$F
+40.65
\$G
+24.42
\$B
+51.06

CED	BEPD	WEPD	YEPD	MILK	\$EN	MARB	RE	FAT
I+8	I+1.7	I+57	I+104	I+21	+.30	+.19	+.49	-.026

Beef Solutions Toolbox

CALVING EASE PERFORMANCE SWN

28

BRUIN 5682 BISMARCK 0106

Birth Date: 4-8-2010 Bull 16858784 Tattoo: 0106

#+GAR Grid Maker [AMF-CAF-M1F-NHF]	#GDAR Traveler 044 [AMF-CAF-M1F-NHF]
SAV Bismarck 5682 [AMF-CAF-M1F-NHF]	GAR Precision 2536 [AMC-NHF]
+15109865 SAV Abigale 0451	#Schoenes Fix It 826 [AMF-CAF-M1F-NHF]
	SAV Abigale 6062
#TC Freedom 104 [AMF-CAF-M1F-NHF]	#Connealy Forefront [AMF-CAF-M1F-NHF]
Bruin 104 Diana 5432	#TC Ruby 9095 [CAF]
+15095949 +Vian Diana Russ 9304	#+Gdar SVF Russ 184B
	Wulffs Erica Dianna C116

\$W
+24.58
\$F
+40.82
\$G
+13.63
\$B
+45.26

CED	BEPD	WEPD	YEPD	MILK	\$EN	MARB	RE	FAT
+7	+2.1	+54	+103	+18	-1.32	-.03	+.61	-.014

Beef Solutions Toolbox

PERFORMANCE

26

BRUIN 5682 BISMARCK 9609 [CAF]

Birth Date: 9-5-2009 Bull +16855125 Tattoo: 9609

#+GAR Grid Maker [AMF-CAF-M1F-NHF]	#GDAR Traveler 044 [AMF-CAF-M1F-NHF]
SAV Bismarck 5682 [AMF-CAF-M1F-NHF]	GAR Precision 2536 [AMC-NHF]
+15109865 SAV Abigale 0451	#Schoenes Fix It 826 [AMF-CAF-M1F-NHF]
	SAV Abigale 6062
#+SAF 598 Bando 5175 [CAC-AMF]	#Bon View Bando 598 [CAC-AMF]
Bruin 5175 Diana Russ C02	+SAF Royal Lass 1002
+14476213 +Vian Diana Russ 9304	#+Gdar SVF Russ 184B
	Wulffs Erica Dianna C116

\$W
+32.57
\$F
+40.65
\$G
+27.92
\$B
+55.41

CED	BEPD	WEPD	YEPD	MILK	\$EN	MARB	RE	FAT
I+8	I+1.7	I+57	I+104	I+21	+.30	+.26	+.53	-.031

Beef Solutions Toolbox

CALVING EASE PERFORMANCE SWN

BEEF SOLUTIONS BULL SALE

Fall Round Up

CIRCLE RANCH, IONE, CA

Angus ■ SimAngus

Breed Averages • 2011 Non-Parent Angus Bulls

CED+5	BW+1.8	WW+47	YW+85	Milk+22	\$EN+56	Marb+39	RE+27	Fat+.009	\$W+26.03	\$F+25.81	\$G+24.18	\$B+50.24
-------	--------	-------	-------	---------	---------	---------	-------	----------	-----------	-----------	-----------	-----------



\$W	+29.81
\$F	+32.49
\$G	+28.63
\$B	+47.18

CED	BEPD	WEPD	YEPD	MILK	SEN	MARB	RE	FAT
+7	-.4	+44	+91	+28	-3.37	+25	+54	-.027

Connealy Thunder

BRUIN 587 THUNDER 0004

29

Birth Date: 1-4-2010 Bull 16855082 Tattoo: 0004

Baldrige Kaboom K243 KCF [CAF] #Jauer 353 Traveler 589 27
 Connealy Thunder [AMF-CAF-M1F-NHF] Pleasanta of Conanga 736
 15148659 #Parka of Conanga 241 [CAC-AMF-NHF] #Bon View Bando 598 [CAC-AMF]
 Partina of Conanga 6237

\$W	+27.79
\$F	+27.50
\$G	+31.66
\$B	+49.83

#Bon View New Design 1407 [AMF-CAF-M1F-NHF] #B/R New Design 036 [AMF-CAF-M1F-NHF]
 Bruin 1407 Kind Princes 8064 Bon View Pride 664
 +16175461 Tehama Kindnes Princess D517 #Finks 5522-6148
 T Kindness Princess A560

CED	BEPD	WEPD	YEPD	MILK	SEN	MARB	RE	FAT
+7	-.2	+44	+86	+28	-5.20	+51	+20	-.002

Beef Solutions Toolbox

○ CALVING EASE ○ QUALITY GRADE ○ SWN



Bruin 587 Thunder 0017 - Lot 31

31

BRUIN 587 THUNDER 0017

Birth Date: 1-14-2010 Bull 16855085 Tattoo: 0017

Baldrige Kaboom K243 KCF [CAF] #Jauer 353 Traveler 589 27
 Connealy Thunder [AMF-CAF-M1F-NHF] Pleasanta of Conanga 736
 15148659 #Parka of Conanga 241 [CAC-AMF-NHF] #Bon View Bando 598 [CAC-AMF]
 Partina of Conanga 6237

\$W	+27.27
\$F	+29.32
\$G	+28.66
\$B	+48.98

#Rito 112 of 2536 Rito 616 [AMF-CAF-M1F-NHF] #Rito 616 of 4B20 6807 [AMF-CAF-M1F-NHF]
 Bruin 112 Forever Lady 7421 GAR Precision 2536 [AMC-NHF]
 +15795797 +Broken Arrow Forever Lady 05 #+VDAR Lucys Boy [AMF-CAF-M1F-NHF]
 +SVF Forever Lady 174B

CED	BEPD	WEPD	YEPD	MILK	SEN	MARB	RE	FAT
+4	+1.3	+47	+89	+26	-4.23	+35	+27	-.020

Beef Solutions Toolbox

○ PERFORMANCE ○ SWN

30

BRUIN 587 THUNDER 9612

Birth Date: 9-7-2009 Bull +16855128 Tattoo: 9612

Baldrige Kaboom K243 KCF [CAF] #Jauer 353 Traveler 589 27
 Connealy Thunder [AMF-CAF-M1F-NHF] Pleasanta of Conanga 736
 15148659 #Parka of Conanga 241 [CAC-AMF-NHF] #Bon View Bando 598 [CAC-AMF]
 Partina of Conanga 6237

\$W	+30.79
\$F	+33.79
\$G	+28.39
\$B	+47.10

#+GAR Grid Maker [AMF-CAF-M1F-NHF] #GDAR Traveler 044 [AMF-CAF-M1F-NHF]
 Thomas Mayflower 4389 GAR Precision 2536 [AMC-NHF]
 14690044 Thomas Mayflower 1429 #B/R New Design 323
 Thomas Mayflower 8006

CED	BEPD	WEPD	YEPD	MILK	SEN	MARB	RE	FAT
1+4	1+2.1	1+51	1+95	1+25	-.98	+19	+70	-.040

Beef Solutions Toolbox

○ PERFORMANCE ○ SWN

32

BRUIN 587 THUNDER 9221

Birth Date: 11-14-2009 Bull 16855840 Tattoo: 9221

Baldrige Kaboom K243 KCF [CAF] #Jauer 353 Traveler 589 27
 Connealy Thunder [AMF-CAF-M1F-NHF] Pleasanta of Conanga 736
 15148659 #Parka of Conanga 241 [CAC-AMF-NHF] #Bon View Bando 598 [CAC-AMF]
 Partina of Conanga 6237

\$W	+31.64
\$F	+46.58
\$G	+29.31
\$B	+56.92

#Mytty In Focus [AMF-CAF-M1F-NHF-RDF] #SAF Focus of ER [AMF-CAF-M1F-NHF]
 Bruin 109 Dianna 6205 [CAF] Mytty Countess 906
 +15597948 +Bruin 5175 Diana Russ C02 #+SAF 598 Bando 5175 [CAC-AMF]
 +Vian Diana Russ 9304

CED	BEPD	WEPD	YEPD	MILK	SEN	MARB	RE	FAT
+6	+5	+58	+110	+28	-10.51	1+.36	1+.41	1-.015

Beef Solutions Toolbox

○ CALVING EASE ○ QUALITY GRADE ○ PERFORMANCE ○ SWN



Bruin 587 Thunder 9612 - Lot 30

33

BRUIN 587 THUNDER 0102

Birth Date: 4-3-2010 Bull 16918200 Tattoo: 0102

Baldrige Kaboom K243 KCF [CAF] #Jauer 353 Traveler 589 27
 Connealy Thunder [AMF-CAF-M1F-NHF] Pleasanta of Conanga 736
 15148659 #Parka of Conanga 241 [CAC-AMF-NHF] #Bon View Bando 598 [CAC-AMF]
 Partina of Conanga 6237

\$W	+28.21
\$F	+30.32
\$G	+30.51
\$B	+50.86

#Bon View New Design 1407 [AMF-CAF-M1F-NHF] #B/R New Design 036 [AMF-CAF-M1F-NHF]
 BAAR USA Forever Lady 3066 Bon View Pride 664
 +14536578 +HR Forever Lady 821 #+Gdar SVF Russ 184B
 +SVF Forever Lady 0400

CED	BEPD	WEPD	YEPD	MILK	SEN	MARB	RE	FAT
+5	+9	+47	+90	+23	-.37	+35	+53	-.010

Beef Solutions Toolbox

○ PERFORMANCE ○ SWN

Breed Averages • 2011 Non-Parent Angus Bulls

CED+5	BW+1.8	WW+47	YW+85	Milk+22	SEN+56	Marb+39	RE+27	Fat+.009	\$W+26.03	\$F+25.81	\$G+24.18	\$B+50.24
-------	--------	-------	-------	---------	--------	---------	-------	----------	-----------	-----------	-----------	-----------



Bruin 765 Pendleton 0052 - Lot 34

34

BRUIN 765 PENDLETON 0052

Birth Date: 2-26-2010 Bull +16858766 Tattoo: 0052

#SAV Final Answer 0035 [AMF-CAF-M1F-NHF]	#Sitz Traveler 8180 [AMF-CAF-M1F-NHF]	\$W
HARB Pendleton 765 JH [AMF-CAF-M1F-NHF]	SAV Emulous 8145 [CAF]	+27.83
15313140 #HARB Black Lady 375 JH	#HARB High Plains 975 JH [AMF-CAF-M1F-NHF]	\$F
	#HARB Black Lady 073 JH	+32.16
#B/R New Design 323	#B/R New Design 036 [AMF-CAF-M1F-NHF]	\$G
R/M Forever Trendy 3042	B/R Ruby of Tiffany 155	+22.49
+14349259 +TRA Forever Trendy 553	#AAR New Trend	\$B
	+SVF Forever Lady 1120	+52.03

CED	BEPD	WEPD	YEPD	MILK	SEN	MARB	RE	FAT
I+7	+8	+50	+93	+23	-2.96	+47	+14	+031

Beef Solutions Toolbox

CALVING EASE QUALITY GRADE PERFORMANCE SWN



Bruin 765 Pendleton 0077 - Lot 37

37

BRUIN 765 PENDLETON 0077

Birth Date: 3-1-2010 Bull +16858778 Tattoo: 0077

#SAV Final Answer 0035 [AMF-CAF-M1F-NHF]	#Sitz Traveler 8180 [AMF-CAF-M1F-NHF]	\$W
HARB Pendleton 765 JH [AMF-CAF-M1F-NHF]	SAV Emulous 8145 [CAF]	+24.18
15313140 #HARB Black Lady 375 JH	#HARB High Plains 975 JH [AMF-CAF-M1F-NHF]	\$F
	#HARB Black Lady 073 JH	+26.67
#B/R New Design 323	#B/R New Design 036 [AMF-CAF-M1F-NHF]	\$G
R/M Forever Trendy 3042	B/R Ruby of Tiffany 155	+26.78
+14349259 +TRA Forever Trendy 553	#AAR New Trend	\$B
	+SVF Forever Lady 1120	+52.84

CED	BEPD	WEPD	YEPD	MILK	SEN	MARB	RE	FAT
I+7	+8	+41	+84	+23	-1.19	+51	+16	+017

Beef Solutions Toolbox

CALVING EASE QUALITY GRADE

35

BRUIN 765 PENDLETON 0082

Birth Date: 3-6-2010 Bull +16858781 Tattoo: 0082

#SAV Final Answer 0035 [AMF-CAF-M1F-NHF]	#Sitz Traveler 8180 [AMF-CAF-M1F-NHF]	\$W
HARB Pendleton 765 JH [AMF-CAF-M1F-NHF]	SAV Emulous 8145 [CAF]	+25.43
15313140 #HARB Black Lady 375 JH	#HARB High Plains 975 JH [AMF-CAF-M1F-NHF]	\$F
	#HARB Black Lady 073 JH	+30.70
#B/R New Design 323	#B/R New Design 036 [AMF-CAF-M1F-NHF]	\$G
R/M Forever Trendy 3042	B/R Ruby of Tiffany 155	+21.58
+14349259 +TRA Forever Trendy 553	#AAR New Trend	\$B
	+SVF Forever Lady 1120	+49.17

CED	BEPD	WEPD	YEPD	MILK	SEN	MARB	RE	FAT
I+7	+1.3	+46	+90	+23	-2.03	+31	+21	+009

Beef Solutions Toolbox

CALVING EASE PERFORMANCE

38

BRUIN 765 PENDLETON 9210

Birth Date: 10-30-2009 Bull 16855835 Tattoo: 9210

#SAV Final Answer 0035 [AMF-CAF-M1F-NHF]	#Sitz Traveler 8180 [AMF-CAF-M1F-NHF]	\$W
HARB Pendleton 765 JH [AMF-CAF-M1F-NHF]	SAV Emulous 8145 [CAF]	+28.36
15313140 #HARB Black Lady 375 JH	#HARB High Plains 975 JH [AMF-CAF-M1F-NHF]	+34.24
	#HARB Black Lady 073 JH	\$G
#OCC Emblazon 854E [CAF-M1F]	#DHD Traveler 6807 [AMF-NHF]	\$G
Bruin 854E Princess 7625	Dixie Erica of CH 1019	+21.08
+16019750 Advantage Kind Princess 2336 [CAF]	#SAF 598 Bando 5175 [CAC-AMF]	\$B
	Tehama Kindnes Princess D517	+46.16

CED	BEPD	WEPD	YEPD	MILK	SEN	MARB	RE	FAT
+7	+2.3	+55	+97	+25	-5.78	I+.37	I+.08	I+.023

Beef Solutions Toolbox

QUALITY GRADE PERFORMANCE SWN

36

BRUIN 765 PENDLETON 9207

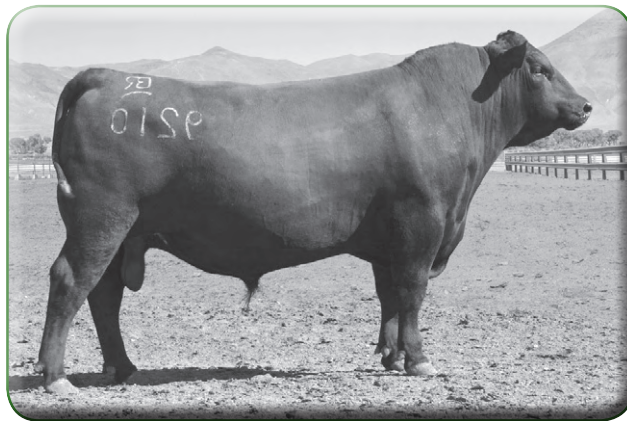
Birth Date: 10-30-2009 Bull 16855834 Tattoo: 9207

#SAV Final Answer 0035 [AMF-CAF-M1F-NHF]	#Sitz Traveler 8180 [AMF-CAF-M1F-NHF]	\$W
HARB Pendleton 765 JH [AMF-CAF-M1F-NHF]	SAV Emulous 8145 [CAF]	+29.17
15313140 #HARB Black Lady 375 JH	#HARB High Plains 975 JH [AMF-CAF-M1F-NHF]	\$F
	#HARB Black Lady 073 JH	+22.47
DDA Emblazon 27C [AMF-CAF-M1F-NHF]	#OCC Emblazon 854E [CAF-M1F]	\$G
Bruin 27C Wendy 7229 [CAF]	#DDA Melisa 824	+23.41
15949496 +BAAR USA Wendy 4060	#Summitcrest High Prime 0H29 [AMF-CAF-M1F-NHF]	\$B
	HR Wendy 618	+46.56

CED	BEPD	WEPD	YEPD	MILK	SEN	MARB	RE	FAT
+9	+1.0	+47	+82	+23	+7.0	I+.40	I+.05	I+.008

Beef Solutions Toolbox

CALVING EASE QUALITY GRADE PERFORMANCE SWN



Bruin 765 Pendleton 9210 - Lot 38

Breed Averages • 2011 Non-Parent Angus Bulls



Bruin 7005 Roundup 0006 - Lot 39

39

BRUIN 7005 ROUNDUP 0006

Birth Date: 1-5-2010 Bull 16855083 Tattoo: 0006

HARB Pendleton 765 JH [AMF-CAF-M1F-NHF]	#SAV Final Answer 0035 [AMF-CAF-M1F-NHF]	\$W
21AR Roundup 7005 [AMF-CAF-D2F-M1F-NHF]	#HARB Black Lady 375 JH	+28.20
15883460	21AR Blackbird Lady F645 [AMF-NHF]	\$F
	#BCC Bushwacker 41-93 [AMF-CAF-D2F-M1F-NHF]	+35.26
	21AR Blackbird Lady C645	\$G
	#Twin Valley Precision E161 [NHC-AMF-CAF-M1F-RDF]	+24.71
Silveiras Elba 2531 [NHF]	#GAR Precision 1680 [AMC-NHC]	\$B
+14328280	DAR Elba 55	+58.45
	+WCC Blackcap C9 [RDC]	
	#DHD Traveler 6807 [AMF-NHF]	
	+VAR Hi Elba 3432	

CED	BEPD	WEPD	YEPD	MILK	SEN	MARB	RE	FAT
+7	+1.4	+55	+98	+18	+.26	+.37	+.56	+.022

Beef Solutions Toolbox

CALVING EASE QUALITY GRADE PERFORMANCE \$WN

41

BRUIN 7005 ROUNDUP 9235

Birth Date: 12-16-2009 Bull 16855843 Tattoo: 9235

HARB Pendleton 765 JH [AMF-CAF-M1F-NHF]	#SAV Final Answer 0035 [AMF-CAF-M1F-NHF]	\$W
21AR Roundup 7005 [AMF-CAF-D2F-M1F-NHF]	#HARB Black Lady 375 JH	+29.48
15883460	21AR Blackbird Lady F645 [AMF-NHF]	\$F
	#BCC Bushwacker 41-93 [AMF-CAF-D2F-M1F-NHF]	+24.40
	21AR Blackbird Lady C645	\$G
	#Basin Max 602C [AMF-CAF-M1F-NHF]	+10.50
Silveiras Entella 2518	#Basin Eline Erica 315U	\$B
+14330103	FAR Lady 527 Traveler 663	+38.41
	#GT Maximum [AMF-CAF-M1F-NHF]	
	#California Traveler [AMF-NHF]	
	FAR Lady 155 Bando 132	

CED	BEPD	WEPD	YEPD	MILK	SEN	MARB	RE	FAT
+11	-.7	+47	+84	+20	+2.81	+.23	+.13	+.052

Beef Solutions Toolbox

CALVING EASE PERFORMANCE SEN \$WN

40

BRUIN 765 PENDLETON 9223

Birth Date: 11-12-2009 Bull 16959215 Tattoo: 9223

HARB Pendleton 765 JH [AMF-CAF-M1F-NHF]	#Sitz Traveler 8180 [AMF-CAF-M1F-NHF]	\$W
15313140	SAV Emulous 8145 [CAF]	+31.45
	#HARB High Plains 975 JH [AMF-CAF-M1F-NHF]	\$F
	#HARB Black Lady 073 JH	+34.02
	#+OCC Emblazon 854E [CAF-M1F]	\$G
Bruin 854E Forever Lady 7641 [CAF]	#DHD Traveler 6807 [AMF-NHF]	+16.56
+16192132	Dixie Erica of CH 1019	\$B
	+BAAR Forever Lady 172	+41.58
	#Bon View Bando 598 [CAC-AMF]	
	+Broken Arrow Forever Lady922	

CED	BEPD	WEPD	YEPD	MILK	SEN	MARB	RE	FAT
+13	-.7	+53	+96	+20	+.55	+.16	+.23	+.012

Beef Solutions Toolbox

CALVING EASE PERFORMANCE \$WN

42

BRUIN 765 PENDLETON 9216

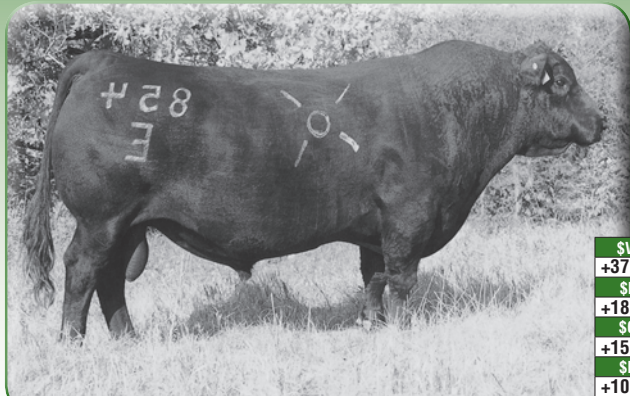
Birth Date: 11-11-2009 Bull 16855839 Tattoo: 9216

HARB Pendleton 765 JH [AMF-CAF-M1F-NHF]	#Sitz Traveler 8180 [AMF-CAF-M1F-NHF]	\$W
15313140	SAV Emulous 8145 [CAF]	+33.24
	#HARB High Plains 975 JH [AMF-CAF-M1F-NHF]	\$F
	#HARB Black Lady 073 JH	+24.46
	DDA Emblazon 27C [AMF-CAF-M1F-NHF]	\$G
DDA Lana 585	#+OCC Emblazon 854E [CAF-M1F]	+18.55
15003334	DDA Melisa 824	\$B
	Dda Lana 936	+41.63
	#+RR Bentley 779F	
	DDA Lana 459	

CED	BEPD	WEPD	YEPD	MILK	SEN	MARB	RE	FAT
+11	-.2	+52	+86	+23	+.09	+.34	-.01	+.024

Beef Solutions Toolbox

CALVING EASE PERFORMANCE \$WN



\$W
+37.14
\$F
+18.86
\$G
+15.46
\$B
+10.98

CED	BEPD	WEPD	YEPD	MILK	SEN	MARB	RE	FAT
+11	+7	+49	+79	+10	+22.35	-.04	+.48	+.004

OCC Emblazon 854E

43

BRUIN 847P PROTOTYPE 0018

Birth Date: 1-14-2010 Bull 16857799 Tattoo: 0018

OCC Kanga 886K	#+OCC Emblazon 854E [CAF-MIF]
OCC Prototype 847P [M1C-CAF]	+OCC Dixie Erica 963H
15269775	OCC Dixie Erica 867K
	#Papa Forte 1921
	OCC Dixie Erica 747F
#BCC Bushwacker 41-93 [AMF-CAF-D2F-M1F-NHF]	#Paramont Ambush 2172 [AMF-CAF-M1F-NHF]
Akers Lucy 3066 [AMF]	RC Anita T Bando 918903
14596539	Thomas Lucy 9348
	#RR Scotchcap 9440 [AMF-NHF]
	#Thomas Lucy 2200

\$W
+32.08
\$F
+7.97
\$G
+17.06
\$B
+28.76

CED	BEPD	WEPD	YEPD	MILK	SEN	MARB	RE	FAT
+10	-.5	+46	+66	+12	+15.81	+.06	+.46	+.009

Beef Solutions Toolbox

<input type="checkbox"/> CALVING EASE	<input type="checkbox"/> SEN	<input type="checkbox"/> SWN
---------------------------------------	------------------------------	------------------------------

46

BRUIN 847P PROTOTYPE 0073

Birth Date: 3-1-2010 Bull +16858776 Tattoo: 0073

OCC Kanga 886K	#+OCC Emblazon 854E [CAF-MIF]
OCC Prototype 847P [M1C-CAF]	+OCC Dixie Erica 963H
15269775	OCC Dixie Erica 867K
	#Papa Forte 1921
	OCC Dixie Erica 747F
#Rito 616 of 4B20 6807 [AMF-CAF-M1F-NHF]	#DHD Traveler 6807 [AMF-NHF]
Thomas Lucy Rose 3437 [AMF]	+Rita 4B20 of 0FB1 Bando
14390383	#Thomas Lucy Rose 1184
	#+VDAR Lucys Boy [AMF-CAF-M1F-NHF]
	Thomas Lucy Rose 9547

\$W
+28.05
\$F
+11.32
\$G
+33.97
\$B
+48.99

CED	BEPD	WEPD	YEPD	MILK	SEN	MARB	RE	FAT
+9	-.3	+39	+67	+15	+13.37	+.46	+.57	+.001

Beef Solutions Toolbox

<input type="checkbox"/> CALVING EASE	<input type="checkbox"/> QUALITY GRADE	<input type="checkbox"/> SEN	<input type="checkbox"/> SWN
---------------------------------------	--	------------------------------	------------------------------

44

BRUIN 847P PROTOTYPE 0054

Birth Date: 2-26-2010 Bull +16858768 Tattoo: 0054

OCC Kanga 886K	#+OCC Emblazon 854E [CAF-MIF]
OCC Prototype 847P [M1C-CAF]	+OCC Dixie Erica 963H
15269775	OCC Dixie Erica 867K
	#Papa Forte 1921
	OCC Dixie Erica 747F
#Rito 616 of 4B20 6807 [AMF-CAF-M1F-NHF]	#DHD Traveler 6807 [AMF-NHF]
Thomas Lucy Rose 3437 [AMF]	+Rita 4B20 of 0FB1 Bando
14390383	#Thomas Lucy Rose 1184
	#+VDAR Lucys Boy [AMF-CAF-M1F-NHF]
	Thomas Lucy Rose 9547

\$W
+30.98
\$F
+15.62
\$G
+26.88
\$B
+45.06

CED	BEPD	WEPD	YEPD	MILK	SEN	MARB	RE	FAT
+9	-.7	+45	+74	+15	+11.60	+.34	+.31	-.003

Beef Solutions Toolbox

<input type="checkbox"/> CALVING EASE	<input type="checkbox"/> SEN	<input type="checkbox"/> SWN
---------------------------------------	------------------------------	------------------------------

47

BRUIN 847P PROTOTYPE 0074

Birth Date: 2-27-2010 Bull +16858777 Tattoo: 0074

OCC Kanga 886K	#+OCC Emblazon 854E [CAF-MIF]
OCC Prototype 847P [M1C-CAF]	+OCC Dixie Erica 963H
15269775	OCC Dixie Erica 867K
	#Papa Forte 1921
	OCC Dixie Erica 747F
#Rito 616 of 4B20 6807 [AMF-CAF-M1F-NHF]	#DHD Traveler 6807 [AMF-NHF]
Thomas Lucy Rose 3437 [AMF]	+Rita 4B20 of 0FB1 Bando
14390383	#Thomas Lucy Rose 1184
	#+VDAR Lucys Boy [AMF-CAF-M1F-NHF]
	Thomas Lucy Rose 9547

\$W
+31.53
\$F
+11.93
\$G
+30.37
\$B
+47.05

CED	BEPD	WEPD	YEPD	MILK	SEN	MARB	RE	FAT
+9	-.2	+45	+70	+15	+12.61	+.30	+.69	-.012

Beef Solutions Toolbox

<input type="checkbox"/> CALVING EASE	<input type="checkbox"/> SEN	<input type="checkbox"/> SWN
---------------------------------------	------------------------------	------------------------------

45

BRUIN 847P PROTOTYPE 0056

Birth Date: 2-26-2010 Bull +16858769 Tattoo: 0056

OCC Kanga 886K	#+OCC Emblazon 854E [CAF-MIF]
OCC Prototype 847P [M1C-CAF]	+OCC Dixie Erica 963H
15269775	OCC Dixie Erica 867K
	#Papa Forte 1921
	OCC Dixie Erica 747F
#Rito 616 of 4B20 6807 [AMF-CAF-M1F-NHF]	#DHD Traveler 6807 [AMF-NHF]
Thomas Lucy Rose 3437 [AMF]	+Rita 4B20 of 0FB1 Bando
14390383	#Thomas Lucy Rose 1184
	#+VDAR Lucys Boy [AMF-CAF-M1F-NHF]
	Thomas Lucy Rose 9547

\$W
+33.18
\$F
+13.05
\$G
+29.75
\$B
+46.67

CED	BEPD	WEPD	YEPD	MILK	SEN	MARB	RE	FAT
+9	-1.0	+47	+72	+15	+12.11	+.33	+.64	+.003

Beef Solutions Toolbox

<input type="checkbox"/> CALVING EASE	<input type="checkbox"/> PERFORMANCE	<input type="checkbox"/> SEN	<input type="checkbox"/> SWN
---------------------------------------	--------------------------------------	------------------------------	------------------------------

48

BRUIN 730P PAXTON 0005

Birth Date: 1-4-2010 Bull 16857804 Tattoo: 0005

OCC Focus 813F	#Basin Rainmaker 654X
OCC Paxton 730P	Dixie Erica of CH 1019
14940735	OCC Blackbird 736K
	#-OCC Great Plains 943G [AMF-CAF-M1F-NHF]
	OCC Blackbird 824G
+Ideal 3542 of 7451 7417 [AMF-CAF-M1F-NHF]	#+Ideal 7451 of 8103 4465 [AMF-CAF-M1F-NHF]
Bruin 3542 Kind Princes 8050	+Ideal 7417 of 1418 4465
+16175453	Tehama Kindnes Princess D517
	#Finks 5522-6148
	T Kindness Princess A560

\$W
+28.40
\$F
+17.28
\$G
+22.55
\$B
+38.65

CED	BEPD	WEPD	YEPD	MILK	SEN	MARB	RE	FAT
+1	+1.4	+43	+75	+18	+8.91	+.29	+.16	+.009

Beef Solutions Toolbox

<input type="checkbox"/> SEN	<input type="checkbox"/> SWN
------------------------------	------------------------------

Breed Averages • 2011 Non-Parent Angus Bulls

CED+5	BW+1.8	WW+47	YW+85	Milk+22	SEN+56	Marb+39	RE+27	Fat+0.09	\$W+26.03	\$F+25.81	\$G+24.18	\$B+50.24
-------	--------	-------	-------	---------	--------	---------	-------	----------	-----------	-----------	-----------	-----------

49

BRUIN 805M MAGNITUDE 0044

Birth Date: 2-16-2010 Bull 16858764 Tattoo: 0044

#+OCC Emblazon 854E [CAF-M1F]	#DHD Traveler 6807 [AMF-NHF]	\$W
OCC Magnitude 805M [AMF-CAF-M1F-NHF]	Dixie Erica of CH 1019	+26.11
14456390	OCC Pollyanna 878G	\$F
	#N Bar Emulation EXT [AMF-CAF-M1F-NHF]	+26.96
	OCC Pollyanna 934E	\$G
		+21.43
#+Woodhill Foresight [AMF-CAF-M1F-NHF]	#Papa Forte 1921	\$B
Bruin 54L Trendy 7053	Bon View Gammer 85 [CAC]	+40.19
15795737	+R/M Forever Trendy 3042	
	#B/R New Design 323	
	+TRA Forever Trendy 553	

CED	BEPD	WEPD	YEPD	MILK	SEN	MARB	RE	FAT
+4	+1.4	+48	+87	+16	+5.42	+20	+37	+008

Beef Solutions Toolbox

<input type="checkbox"/> PERFORMANCE	<input type="checkbox"/> SEN	<input type="checkbox"/> SWN
--------------------------------------	------------------------------	------------------------------



Bruin 904N New Life 0066 - Lot 53

50

BRUIN 5102 BUSTER 0090

Birth Date: 3-20-2010 Bull 16858782 Tattoo: 0090

#+OCC Emblazon 854E [CAF-M1F]	#DHD Traveler 6807 [AMF-NHF]	\$W
Bruin Drought Buster 5102 [AMF]	Dixie Erica of CH 1019	+33.77
15096537	Akers Swan 3099	\$F
	#Rito 616 of 4B20 6807 [AMF-CAF-M1F-NHF]	+5.99
	Thomas Swan 3037	\$G
		+24.27
#+Rito 112 of 2536 Rito 616 [AMF-CAF-M1F-NHF]	#Rito 616 of 4B20 6807 [AMF-CAF-M1F-NHF]	\$B
Bruin 112 Forever Lady 7409	GAR Precision 2536 [AMC-NHF]	+26.24
+15795789	+Broken Arrow Forever Lady 05	
	#+VDAR Lucys Boy [AMF-CAF-M1F-NHF]	
	+SVF Forever Lady 174B	

CED	BEPD	WEPD	YEPD	MILK	SEN	MARB	RE	FAT
+12	-1.8	+44	+63	+17	+11.76	+21	+26	-008

Beef Solutions Toolbox

<input type="checkbox"/> CALVING EASE	<input type="checkbox"/> SEN	<input type="checkbox"/> SWN
---------------------------------------	------------------------------	------------------------------

53

BRUIN 904N NEW LIFE 0066 [CAF]

Birth Date: 3-4-2010 Bull 16858773 Tattoo: 0066

#+OCC Great Plains 943G [AMF-CAF-M1F-NHF]	#N Bar Emulation EXT [AMF-CAF-M1F-NHF]	\$W
OCC New Life 904N	Dixie Erica of CH 1019	+25.49
14940665	OCC Juanada 914K	\$F
	#+OCC Emblazon 854E [CAF-M1F]	+38.74
	OCC Juanada 968G	\$G
		+19.82
#Mytty In Focus [AMF-CAF-M1F-NHF-RDF]	#SAF Focus of ER [AMF-CAF-M1F-NHF]	\$B
Bruin 109 Forever Lady 8008 [CAF]	Mytty Countess 906	+48.06
16175436	+Broken Arrow Forever Lady 05	
	#+Rito 112 of 2536 Rito 616 [AMF-CAF-M1F-NHF]	
	+BAAR Forever Lady 172	

CED	BEPD	WEPD	YEPD	MILK	SEN	MARB	RE	FAT
+4	+2.1	+54	+101	+19	-1.57	+35	+15	+031

Beef Solutions Toolbox

<input type="checkbox"/> PERFORMANCE

51

BRUIN 7022 MARATHON 0079

Birth Date: 3-1-2010 Bull +16858779 Tattoo: 0079

OCC Kirby 633K	#+OCC Emblazon 854E [CAF-M1F]	\$W
BC Marathon 7022 [AMF-CAF-M1F-NHF]	+OCC Blackbird 785H	+24.78
14187839	Gibbet Hill Mignonne E37	\$F
	#Papa Equator 2928 [AMF-NHF]	+24.46
	Gibbet Hill Mignonne TR 29	\$G
		+19.79
#Bon View New Design 1407 [AMF-CAF-M1F-NHF]	#B/R New Design 036 [AMF-CAF-M1F-NHF]	\$B
VAR Susanna 2258	Bon View Pride 664	+48.82
+14168350	VAR Susanna 8131	
	#+VDAR Lucys Boy [AMF-CAF-M1F-NHF]	
	BT Oh Susanna 392E	

CED	BEPD	WEPD	YEPD	MILK	SEN	MARB	RE	FAT
1+2	+4.0	+52	+86	+19	+3.18	+29	+24	+013

Beef Solutions Toolbox

<input type="checkbox"/> PERFORMANCE	<input type="checkbox"/> SEN
--------------------------------------	------------------------------

54

BRUIN 904N NEW LIFE 9256

Birth Date: 12-30-2009 Bull 16857605 Tattoo: 9256

#+OCC Great Plains 943G [AMF-CAF-M1F-NHF]	#N Bar Emulation EXT [AMF-CAF-M1F-NHF]	\$W
OCC New Life 904N	Dixie Erica of CH 1019	+27.96
14940665	OCC Juanada 914K	\$F
	#+OCC Emblazon 854E [CAF-M1F]	+27.94
	OCC Juanada 968G	\$G
		+19.58
#Mytty In Focus [AMF-CAF-M1F-NHF-RDF]	#SAF Focus of ER [AMF-CAF-M1F-NHF]	\$B
Bruin 109 Patricia 8405	Mytty Countess 906	+44.12
+16204469	Thomas Patricia 2049	
	#Rito 616 of 4B20 6807 [AMF-CAF-M1F-NHF]	
	+Thomas Patricia 0672	

CED	BEPD	WEPD	YEPD	MILK	SEN	MARB	RE	FAT
+10	+1	+48	+88	+19	+2.47	+26	+42	+040

Beef Solutions Toolbox

<input type="checkbox"/> CALVING EASE	<input type="checkbox"/> PERFORMANCE	<input type="checkbox"/> SEN	<input type="checkbox"/> SWN
---------------------------------------	--------------------------------------	------------------------------	------------------------------

52

BRUIN 7965 RAVEN 9625

Birth Date: 9-17-2009 Bull +16959216 Tattoo: 9625

BC Marathon 7022 [AMF-CAF-M1F-NHF]	OCC Kirby 633K	\$W
BC 7022 Raven 7965 [AMF-CAF-D2F-M1F-NHF]	Gibbet Hill Mignonne E37	+21.63
15034593	OCC Blackbird 796F	\$F
	#OCC Bonanza 880B	+16.34
	OCC Blackbird 779A	\$G
		+20.81
#+OCC Emblazon 854E [CAF-M1F]	#DHD Traveler 6807 [AMF-NHF]	\$B
CRCC Queen Mother 2349	Dixie Erica of CH 1019	+40.75
15407740	Thomas Queen Mother 5046	
	#Emulation N Bar 5522	
	Thomas Queen Mother 3168	

CED	BEPD	WEPD	YEPD	MILK	SEN	MARB	RE	FAT
1+1	1+3.7	1+43	1+74	1+13	+12.87	+17	+49	+008

Beef Solutions Toolbox

<input type="checkbox"/> SEN

55

BRUIN 702 ENCORE 9622

Birth Date: 9-10-2009 Bull +16857600 Tattoo: 9622

#DHD Traveler 6807 [AMF-NHF]	#QAS Traveler 23-4 [AMF-CAF-M1F-NHF]	\$W
Duff Encore 702 [AMF-CAF-M1F-NHF]	#Bernindful Maid DHD 0807	+25.71
+15944136	OCC Anchor 771A [CAF-M1F]	\$F
	OCC Dixie Erica 814G	+12.64
	OCC Dixie Erica 764C	\$G
		+23.96
#OCC Anchor 771A [CAF-M1F]	#DHD Traveler 6807 [AMF-NHF]	\$B
FCC Blackcap Lady 971P	OCC Juanada 709V	+40.04
15098656	#Hero 6267 of RR 2418	
	+HA Blackcap Lady 0409	
	HA Rito Blackcap 9038	

CED	BEPD	WEPD	YEPD	MILK	SEN	MARB	RE	FAT
1+6	1+2.4	1+43	1+70	1+16	+10.56	+18	+42	-024

Beef Solutions Toolbox

<input type="checkbox"/> SEN	<input type="checkbox"/> SWN
------------------------------	------------------------------



CED	BEPD	WEPD	YEPD	MILK	SEN	MARB	RE	FAT
+3	+3.4	+57	+102	+23	+.78	+.23	-.07	+.096

S A V 8180 Traveler 004

56

BRUIN 004 TRAVELER 9613

Birth Date: 8-30-2009 Bull +16855129 Tattoo: 9613

CED	BEPD	WEPD	YEPD	MILK	SEN	MARB	RE	FAT
I+5	I+3.0	I+48	I+84	I+22	+1.00	+.36	+.02	+.056

Beef Solutions Toolbox

QUALITY GRADE PERFORMANCE

57

BRUIN 004 TRAVELER 9620

Birth Date: 9-6-2009 Bull +16855136 Tattoo: 9620

CED	BEPD	WEPD	YEPD	MILK	SEN	MARB	RE	FAT
I+5	I+3.0	I+48	I+84	I+22	+1.00	+.32	-.04	+.063

Beef Solutions Toolbox

PERFORMANCE

58

BRUIN 004 TRAVELER 9623

Birth Date: 9-11-2009 Bull +16855138 Tattoo: 9623

CED	BEPD	WEPD	YEPD	MILK	SEN	MARB	RE	FAT
I+5	I+3.0	I+48	I+84	I+22	+1.00	+.26	-.02	+.054

Beef Solutions Toolbox

PERFORMANCE

59

BRUIN 6060 HOTROD 0003

Birth Date: 1-2-2010 Bull 16855081 Tattoo: 0003

CED	BEPD	WEPD	YEPD	MILK	SEN	MARB	RE	FAT
+12	+0	+35	+66	+20	+8.22	+.36	+.33	-.021

Beef Solutions Toolbox

CALVING EASE QUALITY GRADE SEN SWN

60

BRUIN 6060 HOTROD 0010

Birth Date: 1-9-2010 Bull 16855084 Tattoo: 0010

CED	BEPD	WEPD	YEPD	MILK	SEN	MARB	RE	FAT
+1	+4.6	+49	+87	+20	+1.89	+.29	+.46	-.028

Beef Solutions Toolbox

PERFORMANCE

61

BRUIN 6060 HOTROD 0019

Birth Date: 1-15-2010 Bull 16855086 Tattoo: 0019

CED	BEPD	WEPD	YEPD	MILK	SEN	MARB	RE	FAT
+3	+2.9	+39	+69	+18	+9.11	+.28	+.29	-.033

Beef Solutions Toolbox

SEN

62

BRUIN EXT EMULATION 9247

Birth Date: 12-23-2009 Bull 16857634 Tattoo: 9247

CED	BEPD	WEPD	YEPD	MILK	SEN	MARB	RE	FAT
+4	+2.6	+44	+83	+12	+10.11	+.20	+.32	+.018

Beef Solutions Toolbox

SEN

Allied Genetic Resources ... Investing in your Success



Our philosophy has always been to produce the most profitable cattle we can for you, our customer. We also understand that capturing the value of the genetics you are using is not always an easy task. That is why we are excited to announce that the Beef Solutions Team has invested in Allied Genetic Resources. (Allied)

Allied is owned by over 60 of the most progressive seedstock operations in the country (together they would sell far more seedstock than anyone), but what makes this company unique is that it was created solely to help you be more profitable and to help us provide you with better customer service.

Allied was created to help you market your cattle more effectively, and to help you reach your own individual goals for your operation. We are excited about the opportunity to leverage the strength, size and scope of this group to provide improved outlets for your cattle.



Allied has agreements with 21 progressive feeding companies representing 48 feedyards interested in purchasing high-quality SimAngus and Angus sired feeder calves. Commercial customers with feeder cattle ready for market, whether they will be sold on the ranch, through a sale barn, or in a video sale should contact Tim Curran or Joe Fischer to make sure our list of feedlots are notified the cattle are available.

You will be hearing much more about Allied moving forward as it will be an integral part of our customer service and marketing assistance program. Beef Solutions is committed to your success and believes that Allied will help us in that regard. We are excited about the future of this industry and that our investment in this company will enable us to help you increase your profitability and enjoyment.

The mission statement of Allied is simple – to help you capture and leverage the value of Beef Solutions genetics. To learn more about what Allied can do for you, a Beef Solutions customer, please feel free to contact us, Marty Ropp or Troy Marshall with Allied, or visit the Allied website.

ALLIED GENETIC RESOURCES
www.alliedgeneticresources.com

Marty Ropp
406-581-7835

Troy Marshall
719-342-0001





Circle Bettis X163 - Lot 63

63 **CIRCLE BETTIS X163** **Homozygous Black**

Birth Date: 7-18-2010 Bull 2583583 Tattoo: X163 Single Birth

Hooks Shear Force 38K Nichols Legacy G151 **1/2 SM**
 Triple C Bettis S72J C&D Tracy **1/2 AN**
 2341670 Lucas Josie 19K Ellingson BlackPerfector
 RIV BLK Josie 43B 755G

ADJ. BW	80
API	126
ADJ. WW	586
TI	70
ADJ. YW	1130

#Bon View New Design 208 [CAC-AMF-NHF] #B/R New Design 036 [AMF-CAF-M1F-NHF]
 #Bon View Erica 443 #CA Future Direction 5321 [AMC-NHC-CAF-M1F]
 Morris Primrose 1701

BW	WW	YW	MILK	YG	MARB	BF	REA
-2.9	20	45	9.7	0.23	0.63	0.09	-0.20

Beef Solutions Toolbox

TI QUALITY GRADE ALL PURPOSE

65 **CIRCLE BETTIS X279** **Homozygous Black**

Birth Date: 8-10-2010 Bull 2583645 Tattoo: X279 Single Birth

Hooks Shear Force 38K Nichols Legacy G151 **1/2 SM**
 Triple C Bettis S72J C&D Tracy **1/2 AN**
 2341670 Lucas Josie 19K Ellingson BlackPerfector
 RIV BLK Josie 43B 755G

ADJ. BW	88
API	106
ADJ. WW	637
TI	64
ADJ. YW	1231

#TC Stockman 365 #TC Stockman
 Circle Stockman K43 TC Pride 0014
 2339078 #Nichols Queen Mother X149 #PS Sasquatch 904
 #Nichols Queen Mother U135

BW	WW	YW	MILK	YG	MARB	BF	REA
0.1	28	63	3.9	0.09	0.40	0.05	0.13

Beef Solutions Toolbox

TI PERFORMANCE RIBEYE QUALITY GRADE

64 **CIRCLE BETTIS X169** **Homozygous Black**

Birth Date: 7-30-2010 Bull 2583588 Tattoo: X169 Single Birth

Hooks Shear Force 38K Nichols Legacy G151 **5/8 SM**
 Triple C Bettis S72J C&D Tracy **3/8 AN**
 2341670 Lucas Josie 19K Ellingson BlackPerfector
 RIV BLK Josie 43B 755G

ADJ. BW	86
API	106
ADJ. WW	533
TI	62
ADJ. YW	1149

B C Matrix 4132 O C C Emblazon 854E
 Circle Matrix T15 CAF Pure Pride EX 99
 2436007 Circle Dateline M45 Connealy Dateline
 K047

BW	WW	YW	MILK	YG	MARB	BF	REA
-0.7	27	56	4.9	0.08	0.31	0.04	0.02

Beef Solutions Toolbox

TI PERFORMANCE RIBEYE

66 **CIRCLE BETTIS X282** **Homozygous Black**

Birth Date: 8-3-2010 Bull 2583647 Tattoo: X282 Single Birth

Hooks Shear Force 38K Nichols Legacy G151 **1/2 SM**
 Triple C Bettis S72J C&D Tracy **1/2 AN**
 2341670 Lucas Josie 19K Ellingson BlackPerfector
 RIV BLK Josie 43B 755G

ADJ. BW	88
API	112
ADJ. WW	592
TI	65
ADJ. YW	1198

#B/R New Design 036 [AMF-CAF-M1F-NHF] #VDAR New Trend 315 [AMF-CAF-M1F-NHF]
 Circle Queen Mother L028 B/R Blackcap Empress 76
 2283915 #Nichols Queen Mother X149 #PS Sasquatch 904
 #Nichols Queen Mother U135

BW	WW	YW	MILK	YG	MARB	BF	REA
-0.6	22	56	4.6	0.19	0.56	0.06	-0.14

Beef Solutions Toolbox

TI QUALITY GRADE ALL PURPOSE

Breed Averages • 2011 SimAngus Bulls

BW -0.6	WW 25.3	YW 52.2	Milk 2.2	YG 0.10	Marb 0.38	Fat 0.05	RE -0.03	API 107	TI 62
---------	---------	---------	----------	---------	-----------	----------	----------	---------	-------



Circle Bettis X173 - Lot 67

67 **CIRCLE BETTIS X173** **Homozygous Black**

Birth Date: 8-3-2010 Bull 2583591 Tattoo: X173 Single Birth

Hooks Shear Force 38K Nichols Legacy G151 **1/2 SM**
Triple C Bettis S72J C&D Tracy **1/2 AN**
 2341670 Lucas Josie 19K Ellingson BlackPerfector
 RIV BLK Josie 43B 755G

ADJ. BW	64
API	104
TI	58
ADJ. WW	535
ADJ. YW	1068

#Vermilion Dateline 7078 [AMF-CAF-M1F-NHF] #Connealy Dateline
Circle Queen Mother N035 #Vermilion Blackbird 5044
 2430378 #Nichols Queen Mother X149 #PS Sasquatch 904
 #Nichols Queen Mother U135

BW	WW	YW	MILK	YG	MARB	BF	REA
-1.7	18	45	2.7	0.03	0.26	0.04	0.05

Beef Solutions Toolbox

RIBEYE

69 **CIRCLE BETTIS X229** **Homozygous Black**

Birth Date: 8-30-2010 Bull 2583627 Tattoo: X229 Single Birth

Hooks Shear Force 38K Nichols Legacy G151 **3/4 SM**
Triple C Bettis S72J C&D Tracy **1/4 AN**
 2341670 Lucas Josie 19K Ellingson BlackPerfector
 RIV BLK Josie 43B 755G

ADJ. BW	79
API	130
TI	73
ADJ. WW	612
ADJ. YW	1129

Nichols Legacy G151 Nichols BLK Destiny D12
Circle Legacy R25 Nichols Debra D81
 233869 Woodwell Blackbird 4E3 Emulation N Bar 5522
 Thomas Blackbird 2497

BW	WW	YW	MILK	YG	MARB	BF	REA
-2.2	26	50	-0.2	0.17	0.58	0.05	-0.24

Beef Solutions Toolbox

TI QUALITY GRADE ALL PURPOSE

68 **CIRCLE BETTIS X211** **Homozygous Black**

Birth Date: 8-15-2010 Bull 2583619 Tattoo: X211 Single Birth

Hooks Shear Force 38K Nichols Legacy G151 **1/2 SM**
Triple C Bettis S72J C&D Tracy **1/2 AN**
 2341670 Lucas Josie 19K Ellingson BlackPerfector
 RIV BLK Josie 43B 755G

ADJ. BW	102
API	105
TI	67
ADJ. WW	642
ADJ. YW	1259

#+GAR Expectation 4915 [AMF-NHF] #N Bar Emulation EXT [AMF-CAF-M1F-NHF]
Circle Expectation S57 GAR Traveler 2421
 2528030 Circle Queen Mother N033 #Bon View New Design 878 [AMF-CAF-M1F-NHF]
 #Nichols Queen Mother X149

BW	WW	YW	MILK	YG	MARB	BF	REA
0.6	34	74	2.3	0.16	0.38	0.04	-0.05

Beef Solutions Toolbox

TI PERFORMANCE QUALITY GRADE

70 **CIRCLE BETTIS X177** **Homozygous Black**

Birth Date: 8-1-2010 Bull 2583595 Tattoo: X177 Single Birth

Hooks Shear Force 38K Nichols Legacy G151 **1/2 SM**
Triple C Bettis S72J C&D Tracy **1/2 AN**
 2341670 Lucas Josie 19K Ellingson BlackPerfector
 RIV BLK Josie 43B 755G

ADJ. BW	83
API	106
TI	59
ADJ. WW	491
ADJ. YW	1029

#Vermilion Dateline 7078 [AMF-CAF-M1F-NHF] #Connealy Dateline
Circle VRD M25 #Vermilion Blackbird 5044
 2577894 +K5 Heiress E41 #Nichols Formula U193
 #+Nichols Heiress A153

BW	WW	YW	MILK	YG	MARB	BF	REA
-0.9	17	47	2.7	0.14	0.46	0.05	-0.19

Beef Solutions Toolbox

QUALITY GRADE

71

CIRCLE BETTIS X180

Homozygous Black

Birth Date: 8-4-2010		Bull 2583598		Tattoo: X180		Frozen Embryo	
Hooks Shear Force 38K		Nichols Legacy G151		1/2 SM		1/2 AN	
Triple C Bettis S72J		C&D Tracy		ADJ. BW		93	
2341670 Lucas Josie 19K		Ellingson BlackPerfector		API		103	
		RIV BLK Josie 43B 755G		TI		61	
				ADJ. WW		601	
				ADJ. YW		1193	
#N Bar Emulation EXT [AMF-CAF-M1F-NHF]		#Emulation N Bar 5522		YG		0.20	
Circle Queen Mother N065		N Bar Primrose 2424		MARB		0.38	
2430381 +Circle Queen Mother J025		#+OSU 6T6 Ultra		BF		0.06	
		#Nichols Queen Mother X149		REA		-0.21	
BW	WW	YW	MILK	YG	MARB	BF	REA
-0.2	24	55	3.2	0.20	0.38	0.06	-0.21
Beef Solutions Toolbox							
QUALITY GRADE							



Circle Bettis X269 - Lot 75

72

CIRCLE BETTIS X181

Homozygous Black

Birth Date: 8-5-2010		Bull 2583599		Tattoo: X181		Frozen Embryo	
Hooks Shear Force 38K		Nichols Legacy G151		1/2 SM		1/2 AN	
Triple C Bettis S72J		C&D Tracy		ADJ. BW		86	
2341670 Lucas Josie 19K		Ellingson BlackPerfector		API		99	
		RIV BLK Josie 43B 755G		TI		59	
				ADJ. WW		550	
				ADJ. YW		1031	
#N Bar Emulation EXT [AMF-CAF-M1F-NHF]		#Emulation N Bar 5522		YG		0.15	
Circle Queen Mother N065		N Bar Primrose 2424		MARB		0.30	
2430381 +Circle Queen Mother J025		#+OSU 6T6 Ultra		BF		0.07	
		#Nichols Queen Mother X149		REA		0.01	
BW	WW	YW	MILK	YG	MARB	BF	REA
-0.2	24	55	3.2	0.15	0.30	0.07	0.01
Beef Solutions Toolbox							
RIBEYE							

75

CIRCLE BETTIS X269

Homozygous Black

Birth Date: 8-8-2010		Bull 2583640		Tattoo: X269		Frozen Embryo	
Hooks Shear Force 38K		Nichols Legacy G151		1/2 SM		1/2 AN	
Triple C Bettis S72J		C&D Tracy		ADJ. BW		88	
2341670 Lucas Josie 19K		Ellingson BlackPerfector		API		105	
		RIV BLK Josie 43B 755G		TI		62	
				ADJ. WW		608	
				ADJ. YW		1162	
#N Bar Emulation EXT [AMF-CAF-M1F-NHF]		#Emulation N Bar 5522		YG		0.25	
Circle Queen Mother N065		N Bar Primrose 2424		MARB		0.46	
2430381 +Circle Queen Mother J025		#+OSU 6T6 Ultra		BF		0.07	
		#Nichols Queen Mother X149		REA		-0.28	
BW	WW	YW	MILK	YG	MARB	BF	REA
-0.2	24	55	3.2	0.25	0.46	0.07	-0.28
Beef Solutions Toolbox							
TI QUALITY GRADE							

73

CIRCLE BETTIS X203

Homozygous Black

Birth Date: 8-11-2010		Bull 2583613		Tattoo: X203		Frozen Embryo	
Hooks Shear Force 38K		Nichols Legacy G151		1/2 SM		1/2 AN	
Triple C Bettis S72J		C&D Tracy		ADJ. BW		84	
2341670 Lucas Josie 19K		Ellingson BlackPerfector		API		97	
		RIV BLK Josie 43B 755G		TI		58	
				ADJ. WW		609	
				ADJ. YW		1229	
#N Bar Emulation EXT [AMF-CAF-M1F-NHF]		#Emulation N Bar 5522		YG		0.30	
Circle Queen Mother N065		N Bar Primrose 2424		MARB		0.29	
2430381 +Circle Queen Mother J025		#+OSU 6T6 Ultra		BF		0.08	
		#Nichols Queen Mother X149		REA		-0.39	
BW	WW	YW	MILK	YG	MARB	BF	REA
-0.2	24	55	3.2	0.30	0.29	0.08	-0.39
Beef Solutions Toolbox							

76

CIRCLE BETTIS X268

Homozygous Black

Birth Date: 8-8-2010		Bull 2583639		Tattoo: X268		Frozen Embryo	
Hooks Shear Force 38K		Nichols Legacy G151		1/2 SM		1/2 AN	
Triple C Bettis S72J		C&D Tracy		ADJ. BW		87	
2341670 Lucas Josie 19K		Ellingson BlackPerfector		API		119	
		RIV BLK Josie 43B 755G		TI		70	
				ADJ. WW		579	
				ADJ. YW		1149	
#N Bar Emulation EXT [AMF-CAF-M1F-NHF]		#Emulation N Bar 5522		YG		0.26	
Circle Queen Mother N065		N Bar Primrose 2424		MARB		0.77	
2430381 +Circle Queen Mother J025		#+OSU 6T6 Ultra		BF		0.08	
		#Nichols Queen Mother X149		REA		-0.21	
BW	WW	YW	MILK	YG	MARB	BF	REA
-0.2	24	55	3.2	0.26	0.77	0.08	-0.21
Beef Solutions Toolbox							
TI QUALITY GRADE ALL PURPOSE							

74

CIRCLE BETTIS X254

Homozygous Black

Birth Date: 8-10-2010		Bull 2583635		Tattoo: X254		Frozen Embryo	
Hooks Shear Force 38K		Nichols Legacy G151		1/2 SM		1/2 AN	
Triple C Bettis S72J		C&D Tracy		ADJ. BW		85	
2341670 Lucas Josie 19K		Ellingson BlackPerfector		API		92	
		RIV BLK Josie 43B 755G		TI		55	
				ADJ. WW		575	
				ADJ. YW		1060	
#N Bar Emulation EXT [AMF-CAF-M1F-NHF]		#Emulation N Bar 5522		YG		0.27	
Circle Queen Mother N065		N Bar Primrose 2424		MARB		0.18	
2430381 +Circle Queen Mother J025		#+OSU 6T6 Ultra		BF		0.07	
		#Nichols Queen Mother X149		REA		-0.37	
BW	WW	YW	MILK	YG	MARB	BF	REA
-0.2	24	55	3.2	0.27	0.18	0.07	-0.37
Beef Solutions Toolbox							

77

CIRCLE BETTIS X176

Homozygous Black

Birth Date: 8-4-2010		Bull 2583594		Tattoo: X176		Single Birth	
Hooks Shear Force 38K		Nichols Legacy G151		1/2 SM		1/2 AN	
Triple C Bettis S72J		C&D Tracy		ADJ. BW		91	
2341670 Lucas Josie 19K		Ellingson BlackPerfector		API		104	
		RIV BLK Josie 43B 755G		TI		63	
				ADJ. WW		572	
				ADJ. YW		1199	
BC Matrix 4132 [AMF-CAF-M1F-NHF]		#+OCC Emblazon 854E [CAF-M1F]		YG		0.24	
Circle Matrix T12		CAF Pure Pride Ext 99		MARB		0.34	
2577895 Circle Heiress L118 N074		#Bon View New Design 878 [AMF-CAF-M1F-NHF]		BF		0.06	
		Circle Heiress L118		REA		-0.22	
BW	WW	YW	MILK	YG	MARB	BF	REA
-0.3	29	65	5.9	0.24	0.34	0.06	-0.22
Beef Solutions Toolbox							
TI PERFORMANCE							



Circle Dual Focus X199 - Lot 78

78 **CIRCLE DUAL FOCUS X199** Homozygous Black
 Birth Date: 8-11-2010 Bull 2583611 Tattoo: X199 Frozen Embryo

Mytty In Focus S A F Focus of E R
 TNT Dual Focus T249 Mytty Countess 906
 2421851 TNT Miss R77 HC Hummer 12M
 TNT Miss Neva N9

Bon View New Design 878 B/R New Design 036
 Circle 878 P37 Bon View Gammer 85
 2287098 Circle Dateline M45 Connealy Dateline
 K047

ADJ. BW	95
API	121
TI	72
ADJ. WW	658
ADJ. YW	1307

BW	WW	YW	MILK	YG	MARB	BF	REA
-1.5	28	60	4.3	0.22	0.70	0.07	-0.17

Beef Solutions Toolbox
 TI PERFORMANCE QUALITY GRADE ALL PURPOSE

80 **CIRCLE DUAL FOCUS X197** Homozygous Black
 Birth Date: 8-10-2010 Bull 2583609 Tattoo: X197 Frozen Embryo

Mytty In Focus S A F Focus of E R
 TNT Dual Focus T249 Mytty Countess 906
 2421851 TNT Miss R77 HC Hummer 12M
 TNT Miss Neva N9

Bon View New Design 878 B/R New Design 036
 Circle 878 P37 Bon View Gammer 85
 2287098 Circle Dateline M45 Connealy Dateline
 K047

ADJ. BW	85
API	114
TI	69
ADJ. WW	557
ADJ. YW	1146

BW	WW	YW	MILK	YG	MARB	BF	REA
-1.5	28	60	4.3	0.29	0.57	0.06	-0.44

Beef Solutions Toolbox
 TI PERFORMANCE QUALITY GRADE ALL PURPOSE

79 **CIRCLE DUAL FOCUS X179** Homozygous Black
 Birth Date: 8-5-2010 Bull 2583597 Tattoo: X179 Frozen Embryo

Mytty In Focus S A F Focus of E R
 TNT Dual Focus T249 Mytty Countess 906
 2421851 TNT Miss R77 HC Hummer 12M
 TNT Miss Neva N9

Bon View New Design 878 B/R New Design 036
 Circle 878 P37 Bon View Gammer 85
 2287098 Circle Dateline M45 Connealy Dateline
 K047

ADJ. BW	84
API	126
TI	76
ADJ. WW	633
ADJ. YW	1098

BW	WW	YW	MILK	YG	MARB	BF	REA
-1.5	28	60	4.3	0.30	0.84	0.09	-0.28

Beef Solutions Toolbox
 TI PERFORMANCE QUALITY GRADE ALL PURPOSE



Circle Dual Focus X197 - Lot 80

Breed Averages • 2011 SimAngus Bulls

BW -0.6	WW 25.3	YW 52.2	Milk 2.2	YG 0.10	Marb 0.38	Fat 0.05	RE -0.03	API 107	TI 62
---------	---------	---------	----------	---------	-----------	----------	----------	---------	-------



Circle Dual Focus X216 - Lot 81



Circle In Focus X191 - Lot 83

81 **CIRCLE DUAL FOCUS X216**
 Birth Date: 8-16-2010 Bull 2583622 Tattoo: X216 Single Birth

Mytty In Focus S A F Focus of E R
 TNT Dual Focus T249 Mytty Countess 906
 2421851 TNT Miss R77 HC Hummer 12M
 TNT Miss Neva N9

GW Lucky Dice 187H LCHMAN Lucky Buck 7049C
 Circle Dice M36 407D
 2271960 Circle Mick G139 Black Mick
 B45

ADJ. BW	94
API	116
TI	73
ADJ. WW	659
ADJ. YW	1260

BW	WW	YW	MILK	YG	MARB	BF	REA
0.7	36	73	1.3	0.19	0.61	0.07	0.07

Beef Solutions Toolbox
 TI PERFORMANCE RIBEYE QUALITY GRADE ALL PURPOSE

83 **CIRCLE IN FOCUS X191**
 Birth Date: 8-8-2010 Bull 2583607 Tattoo: X191 Frozen Embryo

#SAF Focus of ER (AMF-CAF-M1F-NHF) #SAF Fame (AMF-CAF-M1F-NHF)
 Mytty In Focus (AMF-CAF-M1F-NHF-RDF) GDAR Forever Lady 246
 2326312 Mytty Countess 906 #Sitz Alliance 6595 (AMF-M1F-NHF)
 Baldrige Countess 357

Rito2RT2of0B5RRTraveler R R Traveler 5204
 Circle Casino N028 Rita OB5 of 8E23 Bando
 2257041 Circle E67 L041 Harts Black Casino B408
 Circle Diamond A134 E67

ADJ. BW	95
API	118
TI	70
ADJ. WW	668
ADJ. YW	1228

BW	WW	YW	MILK	YG	MARB	BF	REA
-2.5	24	64	1.5	0.29	0.58	0.07	-0.37

Beef Solutions Toolbox
 TI QUALITY GRADE ALL PURPOSE

82 **CIRCLE DUAL FOCUS X156**
 Birth Date: 7-18-2010 Bull 2586226 Tattoo: X156 Homozygous Black Twin

Mytty In Focus S A F Focus of E R
 TNT Dual Focus T249 Mytty Countess 906
 2421851 TNT Miss R77 HC Hummer 12M
 TNT Miss Neva N9

CNS Dream On L186 Nichols Legacy G151
 Circle Dream On U1 CNS Sheeza Dream K107W
 2580650 Circle D27 G103 Black Mick
 D27

ADJ. BW	51
API	123
TI	71
ADJ. WW	518
ADJ. YW	1174

BW	WW	YW	MILK	YG	MARB	BF	REA
-1.8	27	53	1.1	0.13	0.56	0.06	-0.04

Beef Solutions Toolbox
 TI PERFORMANCE QUALITY GRADE ALL PURPOSE

84 **CIRCLE IN FOCUS X174**
 Birth Date: 8-2-2010 Bull 2583592 Tattoo: X174 Homozygous Black Frozen Embryos

#SAF Focus of ER (AMF-CAF-M1F-NHF) #SAF Fame (AMF-CAF-M1F-NHF)
 Mytty In Focus (AMF-CAF-M1F-NHF-RDF) GDAR Forever Lady 246
 2326312 Mytty Countess 906 #Sitz Alliance 6595 (AMF-M1F-NHF)
 Baldrige Countess 357

Rito2RT2of0B5RRTraveler R R Traveler 5204
 Circle Casino N028 Rita OB5 of 8E23 Bando
 2257041 Circle E67 L041 Harts Black Casino B408
 Circle Diamond A134 E67

ADJ. BW	85
API	121
TI	72
ADJ. WW	587
ADJ. YW	1089

BW	WW	YW	MILK	YG	MARB	BF	REA
-2.5	24	64	1.5	0.36	0.68	0.10	-0.40

Beef Solutions Toolbox
 TI QUALITY GRADE ALL PURPOSE



TNT Dual Focus T249

85 **CIRCLE IN FOCUS X187**
 Birth Date: 8-8-2010 Bull 2583604 Tattoo: X187 Homozygous Black Frozen Embryo

#SAF Focus of ER (AMF-CAF-M1F-NHF) #SAF Fame (AMF-CAF-M1F-NHF)
 Mytty In Focus (AMF-CAF-M1F-NHF-RDF) GDAR Forever Lady 246
 2326312 Mytty Countess 906 #Sitz Alliance 6595 (AMF-M1F-NHF)
 Baldrige Countess 357

Rito2RT2of0B5RRTraveler R R Traveler 5204
 Circle Casino N028 Rita OB5 of 8E23 Bando
 2257041 Circle E67 L041 Harts Black Casino B408
 Circle Diamond A134 E67

ADJ. BW	76
API	110
TI	66
ADJ. WW	540
ADJ. YW	1075

BW	WW	YW	MILK	YG	MARB	BF	REA
-2.5	24	64	1.5	0.34	0.42	0.10	-0.31

Beef Solutions Toolbox
 TI QUALITY GRADE ALL PURPOSE



Circle Thunder X185 - Lot 86

86 **CIRCLE THUNDER X185** **Homozygous Black**

Birth Date: 8-8-2010 Bull 2584133 Tattoo: X185 Frozen Embryo

Baldrige Kaboom K243 KCF [CAF] #Jauer 353 Traveler 589 27
 Connealy Thunder [AMF-CAF-M1F-NHF] Pleasanta of Conanga 736
 2437235 #Parka of Conanga 241 [CAC-AMF-NHF] #Bon View Bando 598 [CAC-AMF]
 Partina of Conanga 6237

Connealy Dateline D H D Traveler 6807
 Circle Dateline M45 Eila Eila of Conanga
 2271961 K047 BOZ Black Kat
 Circle Yankee G333

API	ADJ. BW
112	576
TI	ADJ. YW
65	1307

BW	WW	YW	MILK	YG	MARB	BF	REA
-1.7	21	51	6.3	0.11	0.56	0.07	0.09

Beef Solutions Toolbox

TI RIBEYE QUALITY GRADE ALL PURPOSE

88 **CIRCLE THUNDER X205** **Homozygous Black**

Birth Date: 8-11-2010 Bull 2584137 Tattoo: X205 Frozen Embryo

Baldrige Kaboom K243 KCF [CAF] #Jauer 353 Traveler 589 27
 Connealy Thunder [AMF-CAF-M1F-NHF] Pleasanta of Conanga 736
 2437235 #Parka of Conanga 241 [CAC-AMF-NHF] #Bon View Bando 598 [CAC-AMF]
 Partina of Conanga 6237

Connealy Dateline D H D Traveler 6807
 Circle Dateline M45 Eila Eila of Conanga
 2271961 K047 BOZ Black Kat
 Circle Yankee G333

API	ADJ. BW
111	660
TI	ADJ. YW
64	1212

BW	WW	YW	MILK	YG	MARB	BF	REA
-1.7	21	51	6.3	0.13	0.53	0.06	-0.03

Beef Solutions Toolbox

TI RIBEYE QUALITY GRADE ALL PURPOSE

87 **CIRCLE THUNDER X196** **Homozygous Black**

Birth Date: 8-10-2010 Bull 2584135 Tattoo: X196 Frozen Embryo

Baldrige Kaboom K243 KCF [CAF] #Jauer 353 Traveler 589 27
 Connealy Thunder [AMF-CAF-M1F-NHF] Pleasanta of Conanga 736
 2437235 #Parka of Conanga 241 [CAC-AMF-NHF] #Bon View Bando 598 [CAC-AMF]
 Partina of Conanga 6237

Connealy Dateline D H D Traveler 6807
 Circle Dateline M45 Eila Eila of Conanga
 2271961 K047 BOZ Black Kat
 Circle Yankee G333

API	ADJ. BW
94	624
TI	ADJ. YW
55	1209

BW	WW	YW	MILK	YG	MARB	BF	REA
-1.7	21	51	6.3	-0.16	0.17	0.07	-0.08

Beef Solutions Toolbox

TI RIBEYE QUALITY GRADE ALL PURPOSE

89 **CIRCLE THUNDER X266** **Homozygous Black**

Birth Date: 8-8-2010 Bull 2584138 Tattoo: X266 Frozen Embryo

Baldrige Kaboom K243 KCF [CAF] #Jauer 353 Traveler 589 27
 Connealy Thunder [AMF-CAF-M1F-NHF] Pleasanta of Conanga 736
 2437235 #Parka of Conanga 241 [CAC-AMF-NHF] #Bon View Bando 598 [CAC-AMF]
 Partina of Conanga 6237

Connealy Dateline D H D Traveler 6807
 Circle Dateline M45 Eila Eila of Conanga
 2271961 K047 BOZ Black Kat
 Circle Yankee G333

API	ADJ. BW
108	576
TI	ADJ. YW
63	1170

BW	WW	YW	MILK	YG	MARB	BF	REA
-1.7	21	51	6.3	0.16	0.48	0.08	-0.01

Beef Solutions Toolbox

TI RIBEYE QUALITY GRADE ALL PURPOSE



API
116.9
TI
68.9

BW	WW	YW	MILK	YG	MARB	BF	REA
-0.6	24.2	61.7	-0.5	0.19	0.65	0.09	0.06

Circle Twin VP T005

Circle Twin VP T005 was purchased at our sale by Roberti Ranches in 2008. An extremely stout bull with a soft look, we decided to use him in our own herd. His calves have had moderate birth weights, above herd average growth, and the highest marbling ratios this year. We enrolled T005 in the Simmental Association's Carcass Merit Program and his first progeny will be harvested and evaluated in the spring of 2012.

90 **CIRCLE T5 X165** **Homozygous Black**
 Birth Date: 7-17-2010 Bull 2583585 Tattoo: X165 Single Birth

Circle Twin V P N181	TwinValleyPrecision E161	1/2 SM
Circle Twin V P T005	Nichols Queen MotherX149	1/2 AN
2392898 KR6	GW Lucky Strike 147G	
	JRM Cow FR2	

ADJ. BW
101
API
103
TI
63
ADJ. WW
551
ADJ. YW
1195

BW	WW	YW	MILK	YG	MARB	BF	REA
0.0	27	64	-3.7	0.26	0.39	0.08	-0.17

O C C Emblazon 854E D H D Traveler 6807
 Circle Emblazon S46 Dixie Erica of C H 1019
 2430086 TFS Christi 327N Nichols Legacy G151
 TFS Manhattan 1516L

Beef Solutions Toolbox
 TI PERFORMANCE QUALITY GRADE

92 **CIRCLE T5 X168** **Homozygous Black**
 Birth Date: 7-30-2010 Bull 2583587 Tattoo: X168 Single Birth

Circle Twin V P N181	TwinValleyPrecision E161	1/2 SM
Circle Twin V P T005	Nichols Queen MotherX149	1/2 AN
2392898 KR6	GW Lucky Strike 147G	
	JRM Cow FR2	

ADJ. BW
79
API
136
TI
76
ADJ. WW
545
ADJ. YW
1163

BW	WW	YW	MILK	YG	MARB	BF	REA
-2.6	18	54	0.9	0.19	0.90	0.07	-0.14

Nichols Legacy G151 Nichols BLK Destiny D12
 Circle Legacy S32 Nichols Debra D81
 2430093 Woodwell Blackbird 4E3 Emulation N Bar 5522
 Thomas Blackbird 2497

Beef Solutions Toolbox
 TI QUALITY GRADE ALL PURPOSE

91 **CIRCLE T5 X178** **Homozygous Black**
 Birth Date: 8-1-2010 Bull 2583596 Tattoo: X178 Single Birth

Circle Twin V P N181	TwinValleyPrecision E161	1/2 SM
Circle Twin V P T005	Nichols Queen MotherX149	1/2 AN
2392898 KR6	GW Lucky Strike 147G	
	JRM Cow FR2	

ADJ. BW
86
API
105
TI
64
ADJ. WW
640
ADJ. YW
1211

BW	WW	YW	MILK	YG	MARB	BF	REA
-0.9	29	65	0.0	0.23	0.28	0.09	-0.02

Connealy Freightliner Bon View Bando 598
 Circle Freightliner T10 Joana Erica of Conanga
 2436040 FHF Miss Wally F537 3C Wally C240 BLK
 LCHMN BLK Baldy D7069

Beef Solutions Toolbox
 TI PERFORMANCE RIBEYE

93 **CIRCLE T5 X170** **Homozygous Black**
 Birth Date: 8-1-2010 Bull 2583589 Tattoo: X170 Single Birth

Circle Twin V P N181	TwinValleyPrecision E161	1/4 SM
Circle Twin V P T005	Nichols Queen MotherX149	1/2 AN
2392898 KR6	GW Lucky Strike 147G	1/4 CS
	JRM Cow FR2	

ADJ. BW
95
API
112
TI
70
ADJ. WW
608
ADJ. YW
1212

BW	WW	YW	MILK	YG	MARB	BF	REA
0.9	29	69	-0.6	0.24	0.81	0.07	-0.10

GW Lucky Buck 323J LCHMAN Lucky Buck 7049C
 Circle J323 T88 GW Miss Wally 766G
 9577564 Trinity Disco Doll 3223 Bon View New Design 1407
 Crazy M Juana Erica 820M

Beef Solutions Toolbox
 TI PERFORMANCE QUALITY GRADE ALL PURPOSE



Circle T5 X178 - Lot 91

94 **CIRCLE T5 X193** **Homozygous Black**
 Birth Date: 8-10-2010 Bull 2583608 Tattoo: X193 Single Birth

Circle Twin V P N181	TwinValleyPrecision E161	1/2 SM
Circle Twin V P T005	Nichols Queen MotherX149	1/2 AN
2392898 KR6	GW Lucky Strike 147G	
	JRM Cow FR2	

ADJ. BW
85
API
122
TI
68
ADJ. WW
548
ADJ. YW
1160

BW	WW	YW	MILK	YG	MARB	BF	REA
-1.4	15	49	1.9	0.23	0.80	0.09	-0.09

Circle S Leachman 600U Landridge Jet Black
 Circle Queen Mother N022 BDV R52 MS Black Knight
 2239829 Nichols Queen MotherX149 PS Sasquatch 904
 Nichols Queen MotherJ135

Beef Solutions Toolbox
 TI QUALITY GRADE ALL PURPOSE

BW -0.6	WW 25.3	YW 52.2	Milk 2.2	YG 0.10	Marb 0.38	Fat 0.05	RE -0.03	API 107	TI 62
---------	---------	---------	----------	---------	-----------	----------	----------	---------	-------



Circle Emblazon X209 - Lot 95



Circle Olie X186 - Lot 98

95 **CIRCLE EMBLAZON X209** **Homozygous Black**
 Birth Date: 8-14-2010 Bull 2583618 Tattoo: X209 Frozen Embryo

#DHD Traveler 6807 (AMF-NHF) #QAS Traveler 23-4 (AMF-CAF-M1F-NHF)
 OCC Emblazon 854E (CAF-M1F) #Bemindful Maid DHD 0807
 2083298 Dixie Erica of CH 1019 #PBC 707 1M F0203
 Dixie Erica of CH 615

Nichols Legacy G151 Nichols BLK Destiny D12
 TFS Christi 327N Nichols Debra D81
 2223270 TFS Manhattan 1516L WLE Overload
 TFS Hot Tamale H114

ADJ. BW	84
API	114
TI	68
ADJ. WW	610
ADJ. YW	1087

BW	WW	YW	MILK	YG	MARB	BF	REA
-1.9	26	54	-4.7	0.15	0.27	0.07	-0.04

Beef Solutions Toolbox

TI PERFORMANCE RIBEYE ALL PURPOSE

98 **CIRCLE OLIE X186** **Homozygous Black**
 Birth Date: 8-8-2010 Bull 2583603 Tattoo: X186 Single Birth

Nichols Legacy G151 Nichols BLK Destiny D12
 Ellingson Legacy M229 Nichols Debra D81
 2171761 Ellingson MS PStock K58 LRS Preferred Stock 370C
 Ellingson BL Cloud D458

RDDS FuturePrototype 13M GW Lucky Dice 187H
 Circle Prototype S56 C M Merle 777E
 2430116 Circle C14 E19 Black Mick
 C14

ADJ. BW	91
API	109
TI	64
ADJ. WW	660
ADJ. YW	1192

BW	WW	YW	MILK	YG	MARB	BF	REA
-0.4	32	58	-1.1	-0.03	0.19	0.03	0.31

Beef Solutions Toolbox

TI PERFORMANCE RIBEYE ALL PURPOSE

96 **CIRCLE EMBLAZON X212** **Homozygous Black**
 Birth Date: 8-15-2010 Bull 2583620 Tattoo: X212 Frozen Embryo

#DHD Traveler 6807 (AMF-NHF) #QAS Traveler 23-4 (AMF-CAF-M1F-NHF)
 OCC Emblazon 854E (CAF-M1F) #Bemindful Maid DHD 0807
 2083298 Dixie Erica of CH 1019 #PBC 707 1M F0203
 Dixie Erica of CH 615

3C Wally C240 BLK Emmons Black Hercules
 FHF Miss Wally F537 3C Crocus 9278 BL
 1920609 LCHMN BLK Baldy D7069 Circle S Leachman 600U
 Leachman Red Baldy A261

ADJ. BW	85
API	117
TI	67
ADJ. WW	637
ADJ. YW	1150

BW	WW	YW	MILK	YG	MARB	BF	REA
-2.2	24	48	0.1	0.19	0.45	0.09	-0.06

Beef Solutions Toolbox

TI QUALITY GRADE ALL PURPOSE

99 **CIRCLE M606 X222** **Homozygous Black**
 Birth Date: 8-20-2010 Bull 2583624 Tattoo: X222 Frozen Embryo

Alberda Traveler 416 D H D Traveler 6807
 KS Traveler M606 Alberda QueenKimberly222
 2166398 KS Britta K140 Ellingson BlackPerfector
 WWJJ Linda 109G

Nichols Prime Rib E160 Nichols Prime Rib C139
 Circle E160 M11 Nichols Valley C119
 2271956 Circle BOZ K32 BOZ Black Kat
 Circle 831 A16

ADJ. BW	90
API	110
TI	63
ADJ. WW	623
ADJ. YW	1242

BW	WW	YW	MILK	YG	MARB	BF	REA
-0.5	25	54	8.9	0.21	0.39	0.04	-0.39

Beef Solutions Toolbox

TI PERFORMANCE QUALITY GRADE ALL PURPOSE

97 **CIRCLE OLIE X158** **Homozygous Black**
 Birth Date: 7-16-2010 Bull 2583579 Tattoo: X158 Single Birth

Nichols Legacy G151 Nichols BLK Destiny D12
 Ellingson Legacy M229 Nichols Debra D81
 2171761 Ellingson MS PStock K58 LRS Preferred Stock 370C
 Ellingson BL Cloud D458

ES Black Legend PK26 O C C Legend 616L
 Circle Legend U27 ESK26
 2486257 Circle Casino N028 Rito2RT2ofoB5RRTraveler
 Circle E67 LQ41

ADJ. BW	77
API	114
TI	59
ADJ. WW	559
ADJ. YW	1063

BW	WW	YW	MILK	YG	MARB	BF	REA
-2.7	16	41	4.2	-0.07	0.22	0.01	0.15

Beef Solutions Toolbox

RIBEYE ALL PURPOSE



Circle M606 X222 - Lot 99

Breed Averages • 2011 SimAngus Bulls

BW -0.6	WW 25.3	YW 52.2	Milk 2.2	YG 0.10	Marb 0.38	Fat 0.05	RE -0.03	API 107	TI 62
---------	---------	---------	----------	---------	-----------	----------	----------	---------	-------



Circle Lucky Man X183 - Lot 100

100 **CIRCLE LUCKY MAN X183** **Homozygous Black**
 Birth Date: 8-6-2010 Bull 2583601 Tattoo: X183 Single Birth

GW Lucky Charm 665K LCHMAN Lucky Buck 7049C
 222338 GW Miss 600U 508C
 GW Miss 600U 964J Circle S Leachman 600U
 GW Miss Lucky Buck 750G

ADJ. BW	87
API	119
ADJ. WW	664
TI	73
ADJ. YW	1274

BW	WW	YW	MILK	YG	MARB	BF	REA
-1.4	34	76	2.2	0.22	0.44	0.07	-0.06

#N Bar Emulation EXT (AMF-CAF-M1F-NHF) #Emulation N Bar 5522
 Circle D24 N001 N Bar Primrose 2424
 2534564 +K5 Queen Mother D24 #+Nichols Trademark S1
 Nichols Queen Mother U90

Beef Solutions Toolbox
 TI PERFORMANCE QUALITY GRADE ALL PURPOSE

103 **CIRCLE SHEAR FORCE X153** **Homozygous Black**
 Birth Date: 7-18-2010 Bull 2583577 Tattoo: X153 Single Birth

Nichols Legacy G151 Nichols BLK Destiny D12
 Hooks Shear Force 38K Nichols Debra D81
 2081939 C&D Tracy Circle S Leachman 600U
 Betsy

ADJ. BW	86
API	151
ADJ. WW	641
TI	87
ADJ. YW	1189

BW	WW	YW	MILK	YG	MARB	BF	REA
-3.7	32	68	7.4	0.11	0.85	0.07	0.18

#Mytty In Focus (AMF-CAF-M1F-NHF) #SAF Focus of ER (AMF-CAF-M1F-NHF)
 Circle In Focus U57 Mytty Countess 906
 2577898 Circle Extra S4 #Nichols Extra H6 (AMF-CAF-M1F-NHF)
 Circle 878 N12

Beef Solutions Toolbox
 TI PERFORMANCE RIBEYE QUALITY GRADE ALL PURPOSE

104 **CIRCLE SHEAR FORCE X155** **Homozygous Black**
 Birth Date: 7-18-2010 Bull 2583578 Tattoo: X155 Single Birth

Nichols Legacy G151 Nichols BLK Destiny D12
 Hooks Shear Force 38K Nichols Debra D81
 2081939 C&D Tracy Circle S Leachman 600U
 Betsy

ADJ. BW	82
API	132
ADJ. WW	606
TI	75
ADJ. YW	1177

BW	WW	YW	MILK	YG	MARB	BF	REA
-3.3	28	64	7.2	0.02	0.51	0.05	0.27

U16 Vermilion Dateline 7078 Connealy Dateline
 9689460 Circle G16 P7 Rito 616 of 4820 6807
 K 5 Queen Mother D24

Beef Solutions Toolbox
 TI PERFORMANCE RIBEYE QUALITY GRADE ALL PURPOSE

101 **CIRCLE LUCKY MAN X162** **Homozygous Black**
 Birth Date: 8-4-2010 Bull 2583582 Tattoo: X162 Single Birth

GW Lucky Charm 665K LCHMAN Lucky Buck 7049C
 222338 GW Miss 600U 508C
 GW Miss 600U 964J Circle S Leachman 600U
 GW Miss Lucky Buck 750G

ADJ. BW	96
API	96
ADJ. WW	599
TI	63
ADJ. YW	1268

BW	WW	YW	MILK	YG	MARB	BF	REA
0.3	36	83	1.0	0.21	0.13	0.07	0.07

#+OCC Emblazon 854E (CAF-M1F) #DHD Traveler 6807 (AMF-NHF)
 Circle Emblazon R12 Dixie Erica of CH 1019
 2577919 +K5 Heiress E41 #Nichols Formula U193
 #+Nichols Heiress A153

Beef Solutions Toolbox
 TI PERFORMANCE RIBEYE

105 **CIRCLE SHEAR FORCE X157** **Homozygous Black**
 Birth Date: 7-17-2010 Bull 2586812 Tattoo: X157 Single Birth

Nichols Legacy G151 Nichols BLK Destiny D12
 Hooks Shear Force 38K Nichols Debra D81
 2081939 C&D Tracy Circle S Leachman 600U
 Betsy

ADJ. BW	60
API	150
ADJ. WW	527
TI	82
ADJ. YW	1098

BW	WW	YW	MILK	YG	MARB	BF	REA
-5.4	23	57	9.1	0.05	0.72	0.07	0.24

#Mytty In Focus (AMF-CAF-M1F-NHF) #SAF Focus of ER (AMF-CAF-M1F-NHF)
 Circle in Focus U2 Mytty Countess 906
 2586787 +Circle Queen Mother L028 #B/R New Design 036 (AMF-CAF-M1F-NHF)
 #Nichols Queen Mother X149

Beef Solutions Toolbox
 TI RIBEYE QUALITY GRADE ALL PURPOSE

102 **CIRCLE LUCKY MAN X274** **Homozygous Black**
 Birth Date: 8-15-2010 Bull 2583642 Tattoo: X274 Single Birth

GW Lucky Charm 665K LCHMAN Lucky Buck 7049C
 222338 GW Miss 600U 508C
 GW Miss 600U 964J Circle S Leachman 600U
 GW Miss Lucky Buck 750G

ADJ. BW	92
API	121
ADJ. WW	602
TI	73
ADJ. YW	1189

BW	WW	YW	MILK	YG	MARB	BF	REA
-0.7	30	70	8.6	0.14	0.61	0.06	0.10

BC Matrix 4132 (AMF-CAF-M1F-NHF) #+OCC Emblazon 854E (CAF-M1F)
 Circle Matrix T22 CAF Pure Pride Ext 99
 2577896 Trinity Alexandria 3215 #CA Future Direction 5321 (AMC-NHC-CAF-M1F)
 Morris Primrose 1701

Beef Solutions Toolbox
 TI PERFORMANCE RIBEYE QUALITY GRADE ALL PURPOSE

106 **CIRCLE SHEAR FORCE X161** **Homozygous Black**
 Birth Date: 7-20-2010 Bull 2583581 Tattoo: X161 Single Birth

Nichols Legacy G151 Nichols BLK Destiny D12
 Hooks Shear Force 38K Nichols Debra D81
 2081939 C&D Tracy Circle S Leachman 600U
 Betsy

ADJ. BW	85
API	127
ADJ. WW	573
TI	69
ADJ. YW	1069

BW	WW	YW	MILK	YG	MARB	BF	REA
-2.4	23	46	8.8	-0.11	0.44	0.03	0.39

GLS Combination R2 B/R New Frontier 095
 Circle Combination U52 GLS Hostess H16
 2486194 Circle Figures M16 3C Full Countess C288 BLK
 Circle E160 K303

Beef Solutions Toolbox
 TI RIBEYE QUALITY GRADE ALL PURPOSE



Circle Fortunate X213 - Lot 107



Circle Final Answer X166 - Lot 110

107

CIRCLE FORTUNATE X213

Homozygous Black

Birth Date: 8-16-2010 Bull 2583621 Tattoo: X213 Frozen Embryo

SRS Fortune 500	LRS Preferred Stock 370C	1/2 SM
NLC Fortunate Son 100N	SRS Dawson Queen D-27	1/2 AN
2227155 NLC G64 Galix	NLC Black Extender 22E	
	NLC C150 Calix	
		ADJ. BW
		106
		API
		106
		TI
		60
		ADJ. WW
		574
		ADJ. YW
		1196

#DHD Traveler 6807 [AMF-NHF]
Dar 6D18 of 35 Trav 6807
2271333 #Hyline Pride Lucy 9015

#QAS Traveler 23-4 [AMF-CAF-M1F-NHF]
#Bemindful Maid DHD 0807
#AAR New Trend
Hyline Lucy 464

BW	WW	YW	MILK	YG	MARB	BF	REA
-0.3	16	43	6.5	0.23	0.58	0.07	-0.31

Beef Solutions Toolbox

QUALITY GRADE

110

CIRCLE FINAL ANSWER X166

Homozygous Black

Birth Date: 7-28-2010 Bull 2583586 Tattoo: X166 Single Birth

#Sitz Traveler 8180 [AMF-CAF-M1F-NHF]	#GDAR Traveler 71 [AMF-CAF-M1F-NHF]	1/2 SM
SAV Final Answer 0035 [AMF-CAF-M1F-NHF]	Sitz Everelda Entense 1137	1/2 AN
2320695 SAV Emulous 8145 [CAF]	#Bon View Bando 598 [CAC-AMF]	
	SAV Sky Emulous 2124	
		ADJ. BW
		84
		API
		137
		TI
		81
		ADJ. WW
		653
		ADJ. YW
		1207

GFI Dawson J039
BDV Denise L118
2123252 BDV Black Bess C84

Nichols BLK Destiny D12
RIV BLK Josie 43B 755G
Meyers BLK Coalminer 728
JMB Black Y14

BW	WW	YW	MILK	YG	MARB	BF	REA
-2.5	34	65	2.5	0.13	0.67	0.08	0.19

Beef Solutions Toolbox

TI PERFORMANCE RIBEYE QUALITY GRADE ALL PURPOSE

108

CIRCLE FORTUNATE X189

Homozygous Black

Birth Date: 8-9-2010 Bull 2583605 Tattoo: X189 Frozen Embryo

SRS Fortune 500	LRS Preferred Stock 370C	1/2 SM
NLC Fortunate Son 100N	SRS Dawson Queen D-27	1/2 AN
2227155 NLC G64 Galix	NLC Black Extender 22E	
	NLC C150 Calix	
		ADJ. BW
		108
		API
		101
		TI
		56
		ADJ. WW
		554
		ADJ. YW
		1210

#DHD Traveler 6807 [AMF-NHF]
Dar 6D18 of 35 Trav 6807
2271333 #Hyline Pride Lucy 9015

#QAS Traveler 23-4 [AMF-CAF-M1F-NHF]
#Bemindful Maid DHD 0807
#AAR New Trend
Hyline Lucy 464

BW	WW	YW	MILK	YG	MARB	BF	REA
-0.3	16	43	6.5	0.11	0.42	0.04	-0.18

Beef Solutions Toolbox

QUALITY GRADE

111

CIRCLE FINAL ANSWER X175

Homozygous Black

Birth Date: 8-5-2010 Bull 2583593 Tattoo: X175 Single Birth

#Sitz Traveler 8180 [AMF-CAF-M1F-NHF]	#GDAR Traveler 71 [AMF-CAF-M1F-NHF]	1/4 SM
SAV Final Answer 0035 [AMF-CAF-M1F-NHF]	Sitz Everelda Entense 1137	5/8 AN
2320695 SAV Emulous 8145 [CAF]	#Bon View Bando 598 [CAC-AMF]	1/8 CS
	SAV Sky Emulous 2124	
		ADJ. BW
		81
		API
		115
		TI
		65
		ADJ. WW
		553
		ADJ. YW
		1084

GW Lucky Buck 323J
Circle J323 M99
2271964 E1

LCHMAN Lucky Buck 7049C
GW Miss Wally 766G

BW	WW	YW	MILK	YG	MARB	BF	REA
-3.6	23	50	0.3	0.10	0.34	0.06	-0.02

Beef Solutions Toolbox

TI RIBEYE ALL PURPOSE

109

CIRCLE FORTUNATE X236

Homozygous Black

Birth Date: 9-1-2010 Bull 2583628 Tattoo: X236 Single Birth

SRS Fortune 500	LRS Preferred Stock 370C	1/2 SM
NLC Fortunate Son 100N	SRS Dawson Queen D-27	1/2 AN
2227155 NLC G64 Galix	NLC Black Extender 22E	
	NLC C150 Calix	
		ADJ. BW
		96
		API
		106
		TI
		61
		ADJ. WW
		593
		ADJ. YW
		1170

#Larks Canyon 74D4 [AMF-CAF-M1F-NHF]
Circle J031 L030
2283918 +Circle Queen Mother J031

#N Bar Emulation EXT [AMF-CAF-M1F-NHF]
Larks Miss Bando 74A
#+OSU 6T6 Ultra
#Nichols Queen Mother X149

BW	WW	YW	MILK	YG	MARB	BF	REA
0.4	19	53	5.9	0.17	0.60	0.07	-0.07

Beef Solutions Toolbox

QUALITY GRADE

112

CIRCLE LUCKY ACE X281

Homozygous Black

Birth Date: 8-7-2010 Bull 2583646 Tattoo: X281 Single Birth

GW Lucky One 686K	GW Lucky Strike 147G	5/8 SM
GW Lucky Ace 076TS	GS Miss EL Wally	1/4 AN
2370575 GW Miss 1407 866P	Bon View New Design 1407	1/8 GV
	GW Miss High Density 035	
		ADJ. BW
		90
		API
		117
		TI
		69
		ADJ. WW
		615
		ADJ. YW
		1148

KS Traveler M606
Circle M606 S225
2438287 Cicle E160 N026

Alberda Traveler 416
KS Britta K140
Nichols Prime Rib E160
K34

BW	WW	YW	MILK	YG	MARB	BF	REA
1.1	24	53	3.3	0.09	0.84	0.03	-0.08

Beef Solutions Toolbox

TI QUALITY GRADE ALL PURPOSE



Circle 616 X204 - Lot 113

113 **CIRCLE 616 X204** Birth Date: 8-11-2010 Bull 2583614 Tattoo: X204 Single Birth

#DHD Traveler 6807 (AMF-NHF) #OAS Traveler 23-4 (AMF-CAF-M1F-NHF)
 #Bemindful Maid DHD 0807
 #Tehama Bando 155 (AMF-CAF-M1F-NHF)
 +Rita 4B20 of 0FB1 Bando
 +Rita 0FB1 of 5H11 Fullback

Circle 5163 U307
 2486152 Circle Legacy R17

Circle M606 U68
 2486153 Circle N15 R78

Alberda Traveler 416
 KS Britta K140
 GLS Dice N15
 Circle Lassie K012

1/4 SM	ADJ. BW
3/4 AN	75
API	ADJ. WW
119	603
TI	ADJ. YW
70	1181

BW	WW	YW	MILK	YG	MARB	BF	REA
-3.4	24	65	-0.8	0.22	0.47	0.07	-0.17

Beef Solutions Toolbox
 TI PERFORMANCE QUALITY GRADE ALL PURPOSE

115 **CIRCLE U307 X273** Birth Date: 9-10-2010 Bull 2583641 Tattoo: X273 Single Birth

Circle Emblazon S163 O C C Emblazon 854E
 FHF Miss Wally F537
 Nichols Legacy G151
 Woodwell Blackbird 4E3

Circle Freightliner T37
 2436042 FHF Miss Wally F537

Connealy Freightliner
 Bon View Bando 598
 Joana Erica of Conanga
 3C Wally C240 BLK
 LCHMN BLK Baldy D7069

ADJ. BW	92
API	ADJ. WW
116	609
TI	ADJ. YW
71	1152

BW	WW	YW	MILK	YG	MARB	BF	REA
-0.7	33	68	-0.3	0.32	0.51	0.07	-0.40

Beef Solutions Toolbox
 TI PERFORMANCE QUALITY GRADE ALL PURPOSE

116 **CIRCLE U252 X230** Birth Date: 8-10-2010 Bull 2588293 Tattoo: X230 Single Birth

Circle Full Figures R206 3C Full Figures C288 BLK
 Crazy M Juana Erica 6004
 KS Traveler M606
 BDV Christina L1

Circle R206 U252
 2486140 Circle M606 P103

#B/R New Design 036 (AMF-CAF-M1F-NHF)
 #VDAR New Trend 315 (AMF-CAF-M1F-NHF)
 B/R Blackcap Empress 76
 #PS Sasquatch 904
 #Nichols Queen Mother U135

Circle Queen Mother N042
 2484916 #Nichols Queen Mother X149

3/8 SM	ADJ. BW
5/8 AN	92
API	ADJ. WW
122	687
TI	ADJ. YW
69	1249

BW	WW	YW	MILK	YG	MARB	BF	REA
-2.0	15	44	0.6	0.24	0.85	0.05	-0.51

Beef Solutions Toolbox
 QUALITY GRADE

114 **CIRCLE U228 X246** Birth Date: 9-10-2010 Bull 2583633 Tattoo: X246 Single Birth

Circle Emblazon S163 O C C Emblazon 854E
 FHF Miss Wally F537
 Vermilion Dateline 7078
 Circle Queen Mother L002

Circle 5163 U228
 2486188 Circle VRD R4

Alberda Traveler 416
 KS Britta K140
 Harts Black Casino B408
 Circle 831 A16

Circle M606 U68
 9565406 Circle Casino M20

1/8 SM	ADJ. BW
1/2 AN	96
3/8 CS	96
API	ADJ. WW
91	637
TI	ADJ. YW
59	1207

BW	WW	YW	MILK	YG	MARB	BF	REA
1.1	30	64	1.6	0.23	0.34	0.06	-0.19

Beef Solutions Toolbox
 PERFORMANCE

117 **CIRCLE U304 X267** Birth Date: 9-5-2010 Bull 2583638 Tattoo: X267 Single Birth

KS Traveler M606 Alberda Traveler 416
 KS Britta K140
 Rito2RT2of0B5RRTraveler
 Circle E67 L041

Circle M606 U304
 2486130 Circle Casino N028

Nichols Prime Rib E160
 Circle E160 M34
 2271959 Circle 9X D67

Nichols Prime Rib C139
 Nichols Valley C119
 Irish Black Knight
 Circle 9X B18

3/4 SM	ADJ. BW
1/4 AN	83
API	ADJ. WW
88	615
TI	ADJ. YW
53	1149

BW	WW	YW	MILK	YG	MARB	BF	REA
2.2	27	60	5.2	0.18	0.21	0.04	-0.23

Beef Solutions Toolbox
 PERFORMANCE

WIN A FREE BULL!

DON'T FORGET, immediately following the conclusion of the sale there will be a drawing for a **FREE** bull. After the gavel drops on the final bull, we will draw a lot number from a pot and that bull will be given a credit towards the purchase price equal to the final sale average. If the bull selected is less than the average, then the bull is **FREE** with no cash compensation. The winner must be present to receive the award.

The Beef Solutions Team would like to thank the following sponsors for this generous donation:





Circle Fortunate X152 - Lot 118

118 **CIRCLE FORTUNATE X152** **Homozygous Black**
 Birth Date: 1-19-2010 Bull 2568112 Tattoo: X152 Frozen Embryo

SRS Fortune 500	LRS Preferred Stock 370C	1/2 SM
NLC Fortunate Son 100N	SRS Dawson Queen D-27	1/2 AN
2227155 NLC G64 Galix	NLC Black Extender 22E	
	NLC C150 Calix	

#DHD Traveler 6807 (AMF-NHF)	#QAS Traveler 23-4 (AMF-CAF-M1F-NHF)	API	ADJ. WW
Dar 6D18 of 35 Trav 6807	#Bemindful Maid DHD 0807	101	603
2271333 #Hyline Pride Lucy 9015	#AAR New Trend	TI	ADJ. YW
	Hyline Lucy 464	57	1165

BW	WW	YW	MILK	YG	MARB	BF	REA
-0.3	16	43	6.5	0.23	0.49	0.08	-0.29

Beef Solutions Toolbox

QUALITY GRADE

120 **JC CIRCLE FORTUNATE 029X** **Homozygous Black**
 Birth Date: 3-7-2010 Bull 2576711 Tattoo: JC029X Single Birth

SRS Fortune 500	LRS Preferred Stock 370C	1/2 SM
NLC Fortunate Son 100N	SRS Dawson Queen D-27	1/2 AN
2227155 NLC G64 Galix	NLC Black Extender 22E	
	NLC C150 Calix	

+HSAF Bando 1961 (AMF-CAF-M1F-NHF)	#+SAF 598 Bando 5175 (CAC-AMF)	API	ADJ. WW
NLC Lady Jewel R132-T03	+JKS Miss Cheyenne 196	104	657
2492617 NLC Lady Jewel 858-R132	+LCC Papa Forte H154L	TI	ADJ. YW
	Craft Lady Jewel 649-858	58	1144

BW	WW	YW	MILK	YG	MARB	BF	REA
-0.5	16	43	6.2	0.24	0.53	0.08	-0.26

Beef Solutions Toolbox

QUALITY GRADE

119 **CIRCLE FORTUNATE X151** **Homozygous Black**
 Birth Date: 1-18-2010 Bull 2568111 Tattoo: X151 Frozen Embryo

SRS Fortune 500	LRS Preferred Stock 370C	1/2 SM
NLC Fortunate Son 100N	SRS Dawson Queen D-27	1/2 AN
2227155 NLC G64 Galix	NLC Black Extender 22E	
	NLC C150 Calix	

#DHD Traveler 6807 (AMF-NHF)	#QAS Traveler 23-4 (AMF-CAF-M1F-NHF)	API	ADJ. WW
Dar 6D18 of 35 Trav 6807	#Bemindful Maid DHD 0807	97	696
2271333 #Hyline Pride Lucy 9015	#AAR New Trend	TI	ADJ. YW
	Hyline Lucy 464	54	1277

BW	WW	YW	MILK	YG	MARB	BF	REA
-0.3	16	43	6.5	0.07	0.33	0.03	-0.15

Beef Solutions Toolbox

QUALITY GRADE

121 **CIRCLE FORTUNATE 124X** **Homozygous Black**
 Birth Date: 3-18-2010 Bull 2558055 Tattoo: 124X Single Birth

SRS Fortune 500	LRS Preferred Stock 370C	1/2 SM
NLC Fortunate Son 100N	SRS Dawson Queen D-27	1/2 AN
2227155 NLC G64 Galix	NLC Black Extender 22E	
	NLC C150 Calix	

+LCC Papa Forte H154L	#Papa Forte 1921	API	ADJ. WW
Craft Blackbird 850-R124	Leachman Linda B3001	111	625
2491224 Craft Blackbird 420-850	+Craft 71 Traveler 4E	TI	ADJ. YW
	Black Market Blackbird 420	61	1104

BW	WW	YW	MILK	YG	MARB	BF	REA
-0.8	15	39	8.3	0.26	0.67	0.08	-0.33

Beef Solutions Toolbox

QUALITY GRADE ALL PURPOSE



JC Circle Charm 017X - Lot 122

122 JC CIRCLE CHARM 017X

Birth Date: 2-18-2010 Bull 2576719 Tattoo: JC017X

Homozygous Black
Twin
1/2 SM
1/2 AN

GW Lucky Charm 665K LCHMAN Lucky Buck 7049C
GW Lucky Charm 084TS GW Miss 600U 508C
2370578 GW Miss Lucky One 469P GW Lucky One 686K
GW Miss Maternal 834H

ADJ. BW
73

+HSAF Bando 1961 [AMF-CAF-M1F-NHF] #+SAF 598 Bando 5175 [CAC-AMF]
NLC Belle 3466-T95 +JKS Miss Cheyenne 196
2520863 NLC Belle 873-3466 Connealy KC 5029
NLC Belle 27B 873

API	ADJ. WW
126	661
TI	ADJ. YW
70	1279

BW	WW	YW	MILK	YG	MARB	BF	REA
-3.2	22	54	7.2	0.17	0.55	0.06	-0.17

Beef Solutions Toolbox

TI QUALITY GRADE ALL PURPOSE

125 CIRCLE PIONEER 064X

Birth Date: 3-6-2010 Bull 2577752 Tattoo: 064X

Homozygous Black
Single Birth

+Mohnen Pioneer 1945 #SAV 8180 Traveler 004 [AMF-CAF-D2F-M1F-NHF-RDF]
S Pioneer 856 #Mohnen Jilt 910 [CAF]
2520864 S Zaramere 608 #Connealy Danny Boy [AMF-CAF-M1F-NHF]
S Zaramere 4159

ADJ. BW
82

GW Lucky Man 644N GW Lucky Charm 665K
GW Miss Lucky Man 585T GW Miss 600U 964J
2424234 GW Miss Muscleman 447L GW Muscleman 290J
Landmark Enchantress8846

API	ADJ. WW
118	700
TI	ADJ. YW
66	1178

BW	WW	YW	MILK	YG	MARB	BF	REA
-2.9	17	51	1.9	0.11	0.59	0.06	-0.05

Beef Solutions Toolbox

TI QUALITY GRADE ALL PURPOSE

126 CIRCLE PIONEER 409X

Birth Date: 2-28-2010 Bull 2565936 Tattoo: 409X

Homozygous Black
Single Birth

+Mohnen Pioneer 1945 #SAV 8180 Traveler 004 [AMF-CAF-D2F-M1F-NHF-RDF]
S Pioneer 856 #Mohnen Jilt 910 [CAF]
2520864 S Zaramere 608 #Connealy Danny Boy [AMF-CAF-M1F-NHF]
S Zaramere 4159

ADJ. BW
94

GW Lucky Charm 665K LCHMAN Lucky Buck 7049C
JC Miss Lucky Charm 409P GW Miss 600U 508C
2293547 GS Miss EL Wally 3C Wally C240 BLK
GW Miss Tailormade 1359C

API	ADJ. WW
120	604
TI	ADJ. YW
70	1192

BW	WW	YW	MILK	YG	MARB	BF	REA
-0.8	25	62	3.5	0.12	0.67	0.07	0.13

Beef Solutions Toolbox

TI RIBEYE QUALITY GRADE ALL PURPOSE

123 JC CIRCLE CHARM 025X

Birth Date: 3-3-2010 Bull 2576705 Tattoo: JC025X

Single Birth

GW Lucky Charm 665K LCHMAN Lucky Buck 7049C
GW Lucky Charm 084TS GW Miss 600U 508C
2370578 GW Miss Lucky One 469P GW Lucky One 686K
GW Miss Maternal 834H

ADJ. BW
92

GW Lucky Dice 187H LCHMAN Lucky Buck 7049C
GW Miss Lucky Dice 627P 407D
2269673 2-43

API	ADJ. WW
121	724
TI	ADJ. YW
69	1293

BW	WW	YW	MILK	YG	MARB	BF	REA
-2.0	29	65	4.3	0.10	0.34	0.05	0.05

Beef Solutions Toolbox

TI PERFORMANCE RIBEYE ALL PURPOSE

127 CIRCLE PATHFINDER 851X

Birth Date: 2-22-2010 Bull 2577753 Tattoo: 851X

Homozygous Black
Single Birth

G A R Predestined B/R New Design 036
GW Pathfinder 243U G A R EXT 4206
2472121 GW Miss Lucky Strike 005 GW Lucky Strike 147G
GW Miss High Density 654

ADJ. BW
98

GW Precision 764N G A R Precision 1680
GW Miss Precision 851T GW Miss Red Light 879H
2424471 GW Miss Lucky Charm 616M GW Lucky Charm 665K
GW Miss Lucky Dice 306K

API	ADJ. WW
131	792
TI	ADJ. YW
79	1295

BW	WW	YW	MILK	YG	MARB	BF	REA
-0.5	32	72	5.1	0.17	0.84	0.04	-0.13

Beef Solutions Toolbox

TI PERFORMANCE QUALITY GRADE ALL PURPOSE

124 CIRCLE L LUCKY CHARM 236X

Birth Date: 1-23-2010 Bull 2558021 Tattoo: 236X

Homozygous Black
Single Birth

GW Lucky Charm 665K LCHMAN Lucky Buck 7049C
GW Lucky Charm 084TS GW Miss 600U 508C
2370578 GW Miss Lucky One 469P GW Lucky One 686K
GW Miss Maternal 834H

ADJ. BW
81

W236
9664878

API	ADJ. WW
116	593
TI	ADJ. YW
61	1120

BW	WW	YW	MILK	YG	MARB	BF	REA
-4.0	17	36	3.1	0.01	0.25	0.01	-0.21

Beef Solutions Toolbox

ALL PURPOSE

128 CIRCLE PREDESTINED 813X

Birth Date: 2-14-2010 Bull 2577770 Tattoo: 813X

Homozygous Black
Single Birth

G A R Predestined B/R New Design 036
GW Predestined 701T G A R EXT 4206
2414537 GW Miss Lucky Strike 363 GW Lucky Strike 147G
Kappes Moses J213

ADJ. BW
80

GW Precision 764N G A R Precision 1680
GW Miss Precision 813U GW Miss Red Light 879H
2504018 GW Miss Look 195N Kappes PreferredLookL120
2002K

API	ADJ. WW
131	638
TI	ADJ. YW
74	1128

BW	WW	YW	MILK	YG	MARB	BF	REA
-3.0	24	58	2.7	0.10	0.62	0.08	0.21

Beef Solutions Toolbox

TI RIBEYE QUALITY GRADE ALL PURPOSE



Circle Focus 525X - Lot 129

129 CIRCLE FOCUS 525X

129 Birth Date: 2-27-2010 Bull 2558051 Tattoo: 525X Single Birth

#Mytty In Focus [AMF-CAF-M1F-NHF-RDF] #SAF Focus of ER [AMF-CAF-M1F-NHF] Mytty Countess 906 #Bon View New Design 1407 [AMF-CAF-M1F-NHF] OHA Miss 132-128-451

VF Focused Design 703 2471774 #VF Miss New Design 1407 305

GW Lucky Dice 187H LCHMAN Lucky Buck 7049C 407D Leachman Explorer Three Trees Pride 2185

ADJ. BW	99
API	121
ADJ. WW	641
TI	74
ADJ. YW	1239

BW	WW	YW	MILK	YG	MARB	BF	REA
-2.4	29	76	-0.9	0.30	0.61	0.08	-0.28

Beef Solutions Toolbox

TI PERFORMANCE QUALITY GRADE ALL PURPOSE

132 GVF CIRCLE ROMEO 206X

132 Birth Date: 2-6-2010 Bull 2546904 Tattoo: 206X Single Birth

CNS Dream On L186 Nichols Legacy G151 CNS Sheeza Dream K107W WLE Power Stroke WS Miss Buck A12

WS Romeo U10 2460332 Meyer Ranch 146J

KJS Jimbo 12H KJS Redy Fredy GV Amanda Burns Bull C785R GCC Red Vanity Ann C318

GVF Jamie L228 2114513 GV Annalese

ADJ. BW	88
API	112
ADJ. WW	717
TI	59
ADJ. YW	1128

BW	WW	YW	MILK	YG	MARB	BF	REA
-0.5	24	41	0.0	-0.04	0.22	0.02	0.10

Beef Solutions Toolbox

RIBEYE ALL PURPOSE

133 CIRCLE LUCKY BOY 726X

133 Birth Date: 2-19-2010 Bull 2577750 Tattoo: 726X Single Birth

GW Lucky Man 644N GW Lucky Charm 665K GW Miss 600U 964J LCC New Deal G673L GW Miss Maternal 523P

GW Lucky Boy 252U 2471391 GW Miss New Deal 814TS

LCC New Deal G673L Bon View New Design 1407 Leachman Blackbird J3810 Kappes Preferred Look L120 GW Miss Hi Density 055J

GW Miss New Deal 726T 2424364 GW Miss Look 556P

ADJ. BW	102
API	116
ADJ. WW	715
TI	71
ADJ. YW	1184

BW	WW	YW	MILK	YG	MARB	BF	REA
-0.1	34	67	0.2	0.14	0.54	0.05	-0.05

Beef Solutions Toolbox

TI PERFORMANCE QUALITY GRADE ALL PURPOSE

130 CIRCLE DUAL FOCUS X41

130 Birth Date: 2-17-2010 Bull 2558067 Tattoo: X41 Single Birth

Mytty In Focus S A F Focus of E R Mytty Countess 906 HC Hummer 12M TNT Miss Neva N9

TNT Dual Focus T249 2421851 TNT Miss R77

O C C Legend 616L O C C Emblazon 854E O C C Blackbird 632J Stoughs Generation 4 Stough MS Page L33

JVF MS Legend 41T 2400218 STO/KJS MS Page 4 R41

ADJ. BW	94
API	124
ADJ. WW	N/A
TI	72
ADJ. YW	N/A

BW	WW	YW	MILK	YG	MARB	BF	REA
-1.6	28	58	0.2	0.16	0.61	0.06	-0.09

Beef Solutions Toolbox

TI PERFORMANCE QUALITY GRADE ALL PURPOSE

134 CIRCLE LUCKY ONE 775X

134 Birth Date: 2-20-2010 Bull 2577749 Tattoo: 775X Single Birth

GW Lucky One 686K GW Lucky Strike 147G GS Miss EL Wally LCC New Deal G673L GW Miss High Density 818

GW Lucky One 73R 2326996 GW Miss New Deal 126N

GW High Density 856L GW High Density 022E GW Miss Maternal 846H

GW Miss 856L 775T 2424410 2025

ADJ. BW	87
API	103
ADJ. WW	754
TI	59
ADJ. YW	1171

BW	WW	YW	MILK	YG	MARB	BF	REA
-0.4	23	44	2.9	0.00	0.33	0.03	0.12

Beef Solutions Toolbox

RIBEYE

131 CIRCLE THUNDER 0792X

131 Birth Date: 2-15-2010 Bull 2577751 Tattoo: 0792X Twin

+Mohnen Pioneer 1945 #SAV 8180 Traveler 004 [AMF-CAF-Q2F-M1F-NHF-RDF] #Mohnen Jilt 910 [CAF] #Connealy Danny Boy [AMF-CAF-M1F-NHF] S Zaramere 4159

S Pioneer 856 2520864 S Zaramere 608

GW Lucky One 619N GW Lucky One 686K GW Miss Hi Density 226L GW Lucky Charm 665K GW Miss Hi Density 402J

0792T 2457574 GW Miss Lucky Charm 128N

ADJ. BW	75
API	121
ADJ. WW	603
TI	66
ADJ. YW	1124

BW	WW	YW	MILK	YG	MARB	BF	REA
-3.1	16	47	1.6	0.11	0.51	0.07	0.04

Beef Solutions Toolbox

TI RIBEYE QUALITY GRADE ALL PURPOSE

135 CIRCLE QUARTER 7071X

135 Birth Date: 2-16-2010 Bull 2558048 Tattoo: 7071X Single Birth

TFS Lucky Quarter 6471R Bon View New Design 1407 TFS Juniper 112 4504P MV Red Light 406 GW Miss Northern 541F

GW Lucky Quarter U68 2497474 GW Miss Red Light 646H

Utah Gold M254 S/C Stockman 365 1K14 E Bar V L Blackbird K435 JDJ Negotiator 98M JDJ Undeniable Queen 093

Salinas Miss Gold 7071T 2493138 JDJ Miss 98M 71P

ADJ. BW	94
API	121
ADJ. WW	702
TI	71
ADJ. YW	1248

BW	WW	YW	MILK	YG	MARB	BF	REA
-0.7	26	62	7.4	0.05	0.66	0.00	-0.16

Beef Solutions Toolbox

TI PERFORMANCE QUALITY GRADE ALL PURPOSE

The following SimAngus bulls are full two-year-olds that were wintered on native grass and have been summered on irrigated pastures here at home. They have received no grain or chopped hay of any kind in the last 12 months. These bulls are hard, athletic and ready to go to work.



136 CIRCLE LUCKY ACE W184

Birth Date: 8-11-2009 Bull 2535718 Tattoo: W184 Single Birth

Homozygous Black

GW Lucky One 686K
2370575 GW Miss 1407 866P

GW Lucky Strike 147G
GS Miss EL Wally
Bon View New Design 1407
GW Miss High Density 035

KS Traveler M606
Circle M606 577
2430120 Circle Lassie K012 N005

Alberda Traveler 416
KS Britta K140
Bon View New Design 878
Circle Lassie K012

ADJ. BW	88
API	117
TI	66
ADJ. WW	606
ADJ. YW	1095

BW	WW	YW	MILK	YG	MARB	BF	REA
0.4	17	48	2.4	0.09	0.85	0.05	0.03

Beef Solutions Toolbox

TI RIBEYE QUALITY GRADE ALL PURPOSE

139 CIRCLE R206 W303

Birth Date: 10-25-2009 Bull 2535765 Tattoo: W303 Single Birth

Homozygous Black

3C Full Figures C288 BLK
Circle Full Figures R206
2326418 Crazy M Juana Erica 6004

Emmons Black Hercules
3C Danmarka 0922 BLKZ
D H D Traveler 6807
Thomas Juana Erica 4105

KS Traveler M606
Circle M606 590
2430083 Circle Queen Mother N053

Alberda Traveler 416
KS Britta K140
Circle S Leachman 600U
Nichols Queen Mother X149

ADJ. BW	81
API	121
TI	66
ADJ. WW	587
ADJ. YW	1131

BW	WW	YW	MILK	YG	MARB	BF	REA
-2.2	13	39	1.7	0.24	0.73	0.07	-0.40

Beef Solutions Toolbox

TI QUALITY GRADE ALL PURPOSE

137 CRICLE PROTOTYPE W228

Birth Date: 8-18-2009 Bull 2535751 Tattoo: W228 Frozen Embryo

Homozygous Black

GW Lucky Dice 187H
RDDS FuturePrototype 13M
2170197 C M Merle 777E

LCHMAN Lucky Buck 7049C
407D
D H D Traveler 6807
Merle D H D 4844

Black Mick
Circle D27 G103
2107633 D27

Black Knight U2
Big Sandy Ranch R821

ADJ. BW	82
API	108
TI	61
ADJ. WW	612
ADJ. YW	1047

BW	WW	YW	MILK	YG	MARB	BF	REA
-1.1	22	44	2.8	0.15	0.42	0.06	-0.19

Beef Solutions Toolbox

QUALITY GRADE ALL PURPOSE

140 CIRCLE MATRIX W247

Birth Date: 8-28-2009 Bull 2535752 Tattoo: W247 Single Birth

Homozygous Black

B C Matrix 4132
Circle Matrix T173
2486485 Circle J323 P58

O C C Emblazon 854E
CAF Pure Pride EX 99
GW Lucky Buck 323J
Circle Queen Mother L026

#B/R New Design 036 [AMF-CAF-M1F-NHF]
Circle Queen Mother L052
2420084 #Nichols Queen Mother X149

#VDAR New Trend 315 [AMF-CAF-M1F-NHF]
B/R Blackcap Empress 76
#PS Sasquatch 904
#Nichols Queen Mother U135

ADJ. BW	95
API	102
TI	58
ADJ. WW	596
ADJ. YW	1190

BW	WW	YW	MILK	YG	MARB	BF	REA
-0.9	12	46	1.7	0.24	0.61	0.08	-0.26

Beef Solutions Toolbox

QUALITY GRADE

138 CIRCLE R168 W302

Birth Date: 9-27-2009 Bull 2535764 Tattoo: W302 Single Birth

Homozygous Black

O C C Emblazon 854E
Circle Emblazon R168
2326409 FHF Miss Wally F537

D H D Traveler 6807
Dixie Erica of C H 1019
3C Wally C240 BLK
LCHMN BLK Baldy D7069

KS Traveler M606
Circle M606 5117
2430101 Circle Ultra H69

Alberda Traveler 416
KS Britta K140
Mr Wix of Mc Cumber 204
VF3A1 MissForever14-5117

ADJ. BW	92
API	108
TI	65
ADJ. WW	690
ADJ. YW	1188

BW	WW	YW	MILK	YG	MARB	BF	REA
-0.7	25	59	3.0	0.24	0.59	0.05	-0.36

Beef Solutions Toolbox

TI PERFORMANCE QUALITY GRADE ALL PURPOSE



Circle Matrix W247 - Lot 140

Breed Averages • 2011 SimAngus Bulls



Circle Lucky Man W235 - Lot 141

141 **CIRCLE LUCKY MAN W235** Homozygous Black
 Birth Date: 8-16-2009 Bull 2535822 Tattoo: W235 Single Birth

GW Lucky Charm 665K	LCHMAN Lucky Buck 7049C	1/2 SM
GW Lucky Man 644N	GW Miss 600U 508C	1/2 AN
222338 GW Miss 600U 964J	Circle S Leachman 600U	
	GW Miss Lucky Buck 750G	

#+GAR Expectation 4915 [AMF-NHF]	#N Bar Emulation EXT [AMF-CAF-M1F-NHF]	ADJ. BW
Circle Expectation S57	GAR Traveler 2421	91
2528030 Circle Queen Mother N033	#Bon View New Design 878 [AMF-CAF-M1F-NHF]	API
	#Nichols Queen Mother X149	113
		ADJ. WW
		625
		TI
		ADJ. YW
		68
		1233

BW	WW	YW	MILK	YG	MARB	BF	REA
-0.6	30	73	8.3	0.17	0.46	0.06	-0.01

Beef Solutions Toolbox
 TI PERFORMANCE RIBEYE QUALITY GRADE ALL PURPOSE

143 **CIRCLE LUCKY MAN W191** Homozygous Black
 Birth Date: 8-12-2009 Bull 2535784 Tattoo: W191 Single Birth

GW Lucky Charm 665K	LCHMAN Lucky Buck 7049C	1/2 SM
GW Lucky Man 644N	GW Miss 600U 508C	1/2 AN
222338 GW Miss 600U 964J	Circle S Leachman 600U	
	GW Miss Lucky Buck 750G	

#+OCC Emblazon 854E [CAF-M1F]	#DHD Traveler 6807 [AMF-NHF]	ADJ. BW
Circle Emblazon R8	Dixie Erica of CH 1019	86
2528024 Circle Schurtpop M17	#Schurtpop Supreme [DEF]	API
	Circle Executive J3	117
		ADJ. WW
		582
		TI
		ADJ. YW
		69
		1235

BW	WW	YW	MILK	YG	MARB	BF	REA
-1.4	27	63	1.9	0.18	0.51	0.06	-0.08

Beef Solutions Toolbox
 TI PERFORMANCE QUALITY GRADE ALL PURPOSE

142 **CIRCLE LUCKY MAN W174** Homozygous Black
 Birth Date: 8-9-2009 Bull 2535786 Tattoo: W174 Single Birth

GW Lucky Charm 665K	LCHMAN Lucky Buck 7049C	1/2 SM
GW Lucky Man 644N	GW Miss 600U 508C	1/2 AN
222338 GW Miss 600U 964J	Circle S Leachman 600U	
	GW Miss Lucky Buck 750G	

#Bon View New Design 878 [AMF-CAF-M1F-NHF]	#B/R New Design 036 [AMF-CAF-M1F-NHF]	ADJ. BW
Circle 878 S15	Bon View Gammer 85 [CAC]	77
2528027 Circle Lassie K012	#+OSU 6T6 Ultra	API
	+Circle Lassie F103	117
		ADJ. WW
		572
		TI
		ADJ. YW
		65
		1218

BW	WW	YW	MILK	YG	MARB	BF	REA
-2.4	20	56	10.1	0.22	0.48	0.08	-0.18

Beef Solutions Toolbox
 TI QUALITY GRADE ALL PURPOSE

144 **CIRCLE LUCKY MAN W320** Homozygous Black
 Birth Date: 8-10-2009 Bull 2535772 Tattoo: W320 Single Birth

GW Lucky Charm 665K	LCHMAN Lucky Buck 7049C	1/2 SM
GW Lucky Man 644N	GW Miss 600U 508C	1/2 AN
222338 GW Miss 600U 964J	Circle S Leachman 600U	
	GW Miss Lucky Buck 750G	

#B/R New Design 036 [AMF-CAF-M1F-NHF]	#VDAR New Trend 315 [AMF-CAF-M1F-NHF]	ADJ. BW
Circle Queen Mother L028	B/R Blackcap Empress 76	86
2283915 #Nichols Queen Mother X149	#PS Sasquatch 904	API
	#Nichols Queen Mother U135	117
		ADJ. WW
		642
		TI
		ADJ. YW
		66
		1234

BW	WW	YW	MILK	YG	MARB	BF	REA
-1.2	20	54	9.0	0.01	0.58	0.03	0.16

Beef Solutions Toolbox
 TI RIBEYE QUALITY GRADE ALL PURPOSE



Circle T182 W301 - Lot 145



Circle R187 W294 - Lot 147

145 **CIRCLE T182 W301** **Homozygous Black**
 Birth Date: 10-1-2009 Bull 2535695 Tattoo: W301 Single Birth
 1/4 SM
 3/4 AN

RDDS FuturePrototype 13M GW Lucky Dice 187H
 Circle Prototype T182 C M Merle 777E
 2439141 Circle D27 G103 Black Mick
 D27

ADJ. BW	87
API	101
ADJ. WW	619
TI	55
ADJ. YW	1198

#B/R New Design 036 [AMF-CAF-MIF-NHF] #VDAR New Trend 315 [AMF-CAF-MIF-NHF]
 Circle 036 P32 B/R Blackcap Empress 76
 2430386 #Nichols Queen Mother X149 #PS Sasquatch 904
 #Nichols Queen Mother U135

BW	WW	YW	MILK	YG	MARB	BF	REA
-1.7	11	38	4.6	0.19	0.49	0.09	-0.09

Beef Solutions Toolbox
 QUALITY GRADE

147 **CIRCLE R187 W294** **Homozygous Black**
 Birth Date: 10-4-2009 Bull 2535704 Tattoo: W294 Single Birth
 PB SM

CNS Dream On L186 Nichols Legacy G151
 Circle Dream On R187 CNS Sheeza Dream K107W
 2326414 FHF Miss Wally F537 3C Wally C240 BLK
 LCHMN BLK Baldy D7069

ADJ. BW	91
API	119
ADJ. WW	650
TI	63
ADJ. YW	1171

BOZ Black Kat BOZ Hack N Black
 Circle Kat J41 BOZ Coretta
 2273501 Circle D36 F85 Nichols BLK Destiny D12
 Circle B50 D36

BW	WW	YW	MILK	YG	MARB	BF	REA
-0.1	22	44	3.1	-0.11	0.36	0.03	0.40

Beef Solutions Toolbox
 TI RIBEYE ALL PURPOSE

146 **CIRCLE FORTUNATE W166** **Homozygous Black**
 Birth Date: 7-31-2009 Bull 2535774 Tattoo: W166 Twin
 1/2 SM
 1/2 AN

SRS Fortune 500 LRS Preferred Stock 370C
 NLC Fortunate Son 100N SRS Dawson Queen D-27
 2227155 NLC G64 Galix NLC Black Extender 22E
 NLC C150 Calix

ADJ. BW	58
API	103
ADJ. WW	twinn
TI	58
ADJ. YW	twinn

#Larks Canyon 74D4 [AMF-CAF-MIF-NHF] #N Bar Emulation EXT [AMF-CAF-MIF-NHF]
 Circle J031 L030 Larks Miss Bando 74A
 2283918 +Circle Queen Mother J031 #+OSU 6T6 Ultra
 #Nichols Queen Mother X149

BW	WW	YW	MILK	YG	MARB	BF	REA
-0.8	16	47	6.4	0.20	0.45	0.06	-0.26

Beef Solutions Toolbox
 QUALITY GRADE

148 **CIRCLE DUAL FOCUS W227** **Homozygous Black**
 Birth Date: 8-19-2009 Bull 2535715 Tattoo: W227 Frozen Embryo
 1/2 SM
 1/2 AN

Mytty In Focus S A F Focus of E R
 TNT Dual Focus T249 Mytty Countess 906
 2421851 TNT Miss R77 HC Hummer 12M
 TNT Miss Neva N9

ADJ. BW	86
API	122
ADJ. WW	634
TI	70
ADJ. YW	1169

Circle S Leachman 600U Landridge Jet Black
 Circle Queen Mother N046 BDV R52 MS Black Knight
 2239830 Nichols Queen Mother X149 PS Sasquatch 904
 Nichols Queen Mother U135

BW	WW	YW	MILK	YG	MARB	BF	REA
-1.4	24	55	1.9	0.09	0.63	0.07	0.19

Beef Solutions Toolbox
 TI RIBEYE QUALITY GRADE ALL PURPOSE

BEEF SOLUTIONS BULL SALE
Fall Round Up
CIRCLE RANCH, IONE, CA
 Angus ■ SimAngus



Circle Dual Focus W227 - Lot 148

SimAngus



Circle T148 W240 - Lot 149



Circle T250 W272 - Lot 150

149 **CIRCLE T148 W240** **Homozygous Black**

Birth Date: 8-25-2009 Bull 2535730 Tattoo: W240 Single Birth

Alberda Traveler 416 D H D Traveler 6807
 Circle Traveler T148 Alberda QueenKimberly222
 2436048 FHF Miss Wally F537 3C Wally C240 BLK
 LCHMN BLK Baldy D7069

ADJ. BW	89
API	110
TI	60
ADJ. WW	580
ADJ. YW	1101

GW Lucky Buck 323J LCHMAN Lucky Buck 7049C
 Circle J323 L099 GW Miss Wally 766G
 2151056 6807

BW	WW	YW	MILK	YG	MARB	BF	REA
-0.9	15	34	2.6	0.09	0.57	0.05	-0.09

Beef Solutions Toolbox

QUALITY GRADE ALL PURPOSE

150 **CIRCLE T250 W272** **Homozygous Black**

Birth Date: 9-21-2009 Bull 2535729 Tattoo: W282 Single Birth

Circle Dream On R187 CNS Dream On L186
 Circle Dream On T250 FHF Miss Wally F537
 2435973 Circle Queen Mother N047 B/R New Design 036
 Nichols Queen MotherX149

ADJ. BW	89
API	125
TI	68
ADJ. WW	650
ADJ. YW	1244

Nichols Prime Rib E160 Nichols Prime Rib C139
 Circle E160 M11 Nichols Valley C119
 2271956 Circle BOZ K32 BOZ Black Kat
 Circle 831 A16

BW	WW	YW	MILK	YG	MARB	BF	REA
-1.7	20	48	7.9	0.17	0.63	0.08	-0.03

Beef Solutions Toolbox

TI RIBEYE QUALITY GRADE ALL PURPOSE

WIN A FREE BULL!

DON'T FORGET, immediately following the conclusion of the sale there will be a drawing for a **FREE** bull. After the gavel drops on the final bull, we will draw a lot number from a pot and that bull will be given a credit towards the purchase price equal to the final sale average. If the bull selected is less than the average, then the bull is **FREE** with no cash compensation. The winner must be present to receive the award.

The Beef Solutions Team would like to thank the following sponsors for this generous donation:



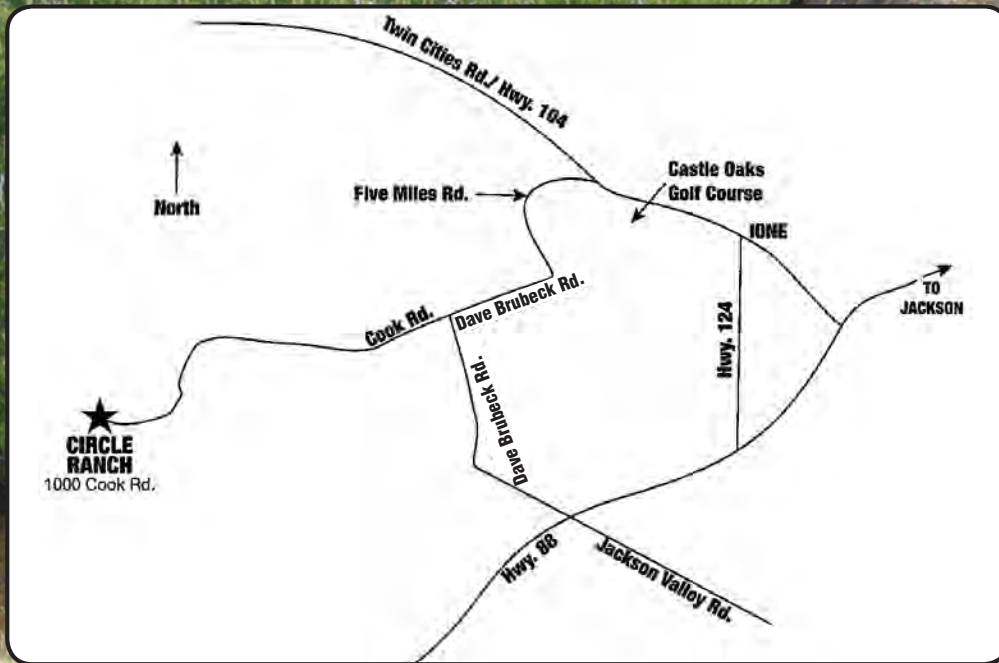
Breed Averages • 2011 SimAngus Bulls

BW -0.6	WW 25.3	YW 52.2	Milk 2.2	YG 0.10	Marb 0.38	Fat 0.05	RE -0.03	API 107	TI 62
---------	---------	---------	----------	---------	-----------	----------	----------	---------	-------

Beef Solutions Sale

1000 Cook Rd.
Ione, CA 95640

PRSR FIRST CLASS
MAIL
U.S. POSTAGE
PAID
St. Joseph, MO
Permit #2017



SEPTEMBER 22, 2011 • 1 P.M.
Circle Ranch • Ione, CA